



# 2016

## Edit Management Tool Installation Guide

October 2016

## **MED2020 Health Care Software Inc.**

MED2020 Health Software Inc. (MED2020) is the leading provider of modular health information management solutions for the Canadian health care industry and is headquartered in Ottawa, Ontario. Solutions are offered to assist in capturing, reporting and analyzing health data to support enhanced information sharing, encourage informed decision making and streamline facility operations. MED2020's flagship product, WinRecs, is the foundation for a complementary suite of modules that have also been designed to assist health information management departments with their operational needs.

## **Contact Details**

MED2020 is open Monday to Friday between 07:00 and 19:00 (Eastern Time), except Canadian federal holidays and Ontario provincial holidays.

## **Head Office**

MED2020 Health Care Software Incorporated  
4471 Innes Road, Suite #200  
Ottawa, Ontario  
K4A 3J7

Tel: (613) 830-3761  
Fax: (613) 830-2410  
Toll Free: (800) 461-2020

E-mail: [support@med2020.ca](mailto:support@med2020.ca)  
Web: <http://www.med2020.ca>

## End-User License Agreement

MED2020 proprietary rights are included in the information disclosed in this manual.

Permission to reprint this document is provided to facilities and users of a licensed MED2020 **WinRecs™** applications, provided the document is complete and its contents remain unaltered. No proof of status is required.

Neither this document nor the information disclosed herein, or any part thereof, shall be transferred to other documents, used by, or disclosed to other parties for any purpose except as explicitly authorized by MED2020 Health Care Software Inc.

MED2020 Health Care Software Inc. cannot give permission for use of any third-party content.

## Table of Contents

1	INTRODUCTION .....	5
2	CLIENT INSTALLATION.....	6

# 1 Introduction

## **READ THIS SECTION BEFORE INSTALLING ANY SOFTWARE**

This document was written for a moderately technical audience. It is assumed throughout the document that the user is familiar with the fundamental concepts with respect to file and computer.

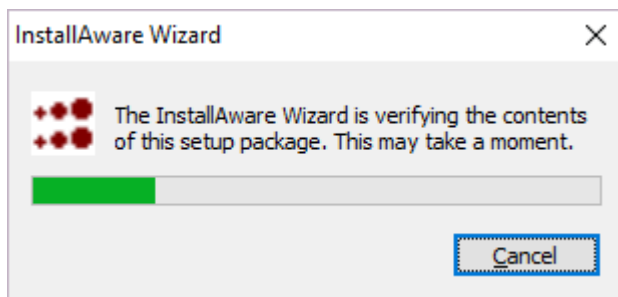
The information contained in this document is provided to assist with the installation of the Edits Management Tool. This installation assumes that WinRecs 293.2 or higher is already installed.

Contact MED2020 [Client Services](#) for more assistance with any information contained in this document.

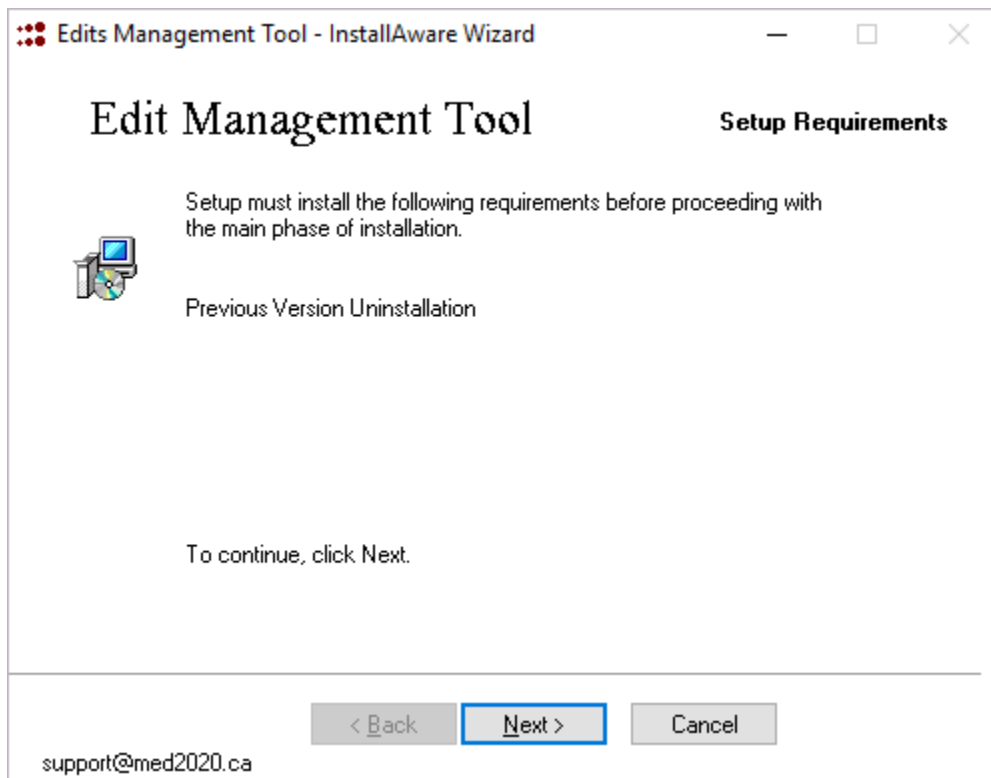
## 2 Client Installation

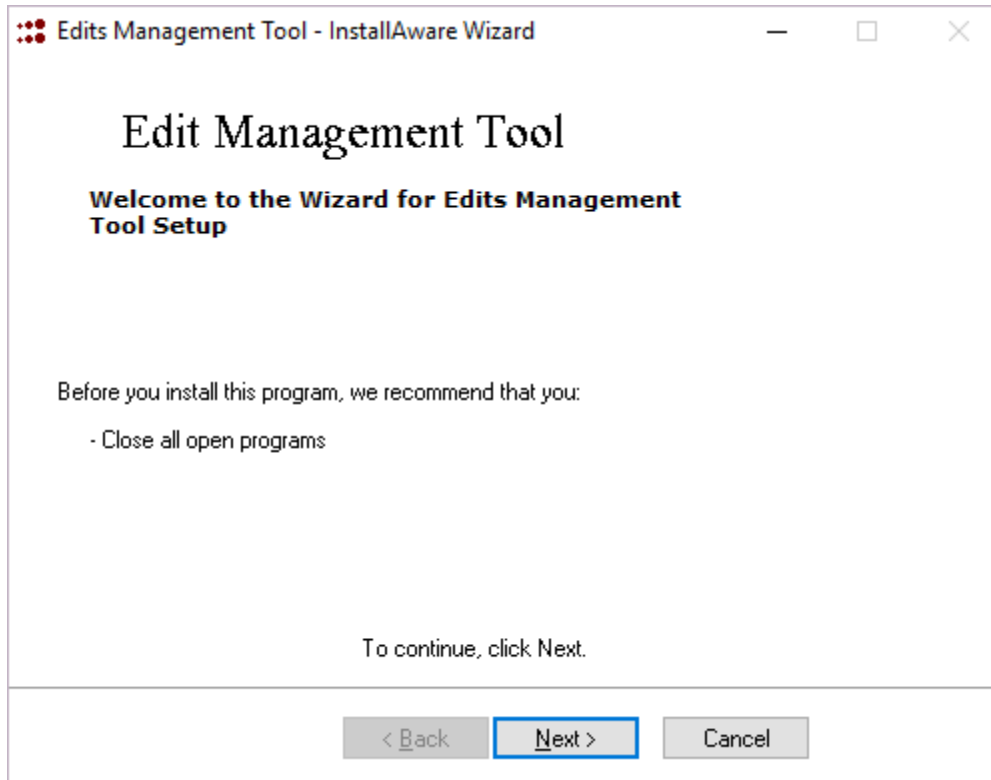
To install Edits Management Tool client will run the MED2020EMT.exe

Install package opens.

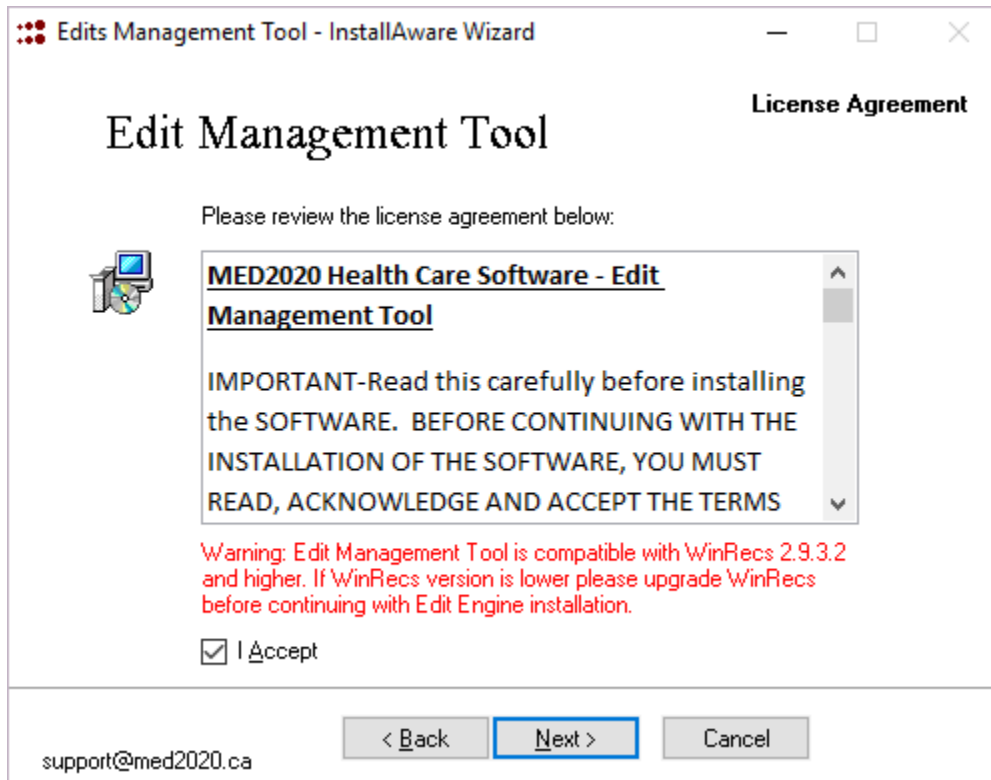


Click **Next >**





Ensure check box "I accept the license agreement" is checked and click **Next >**

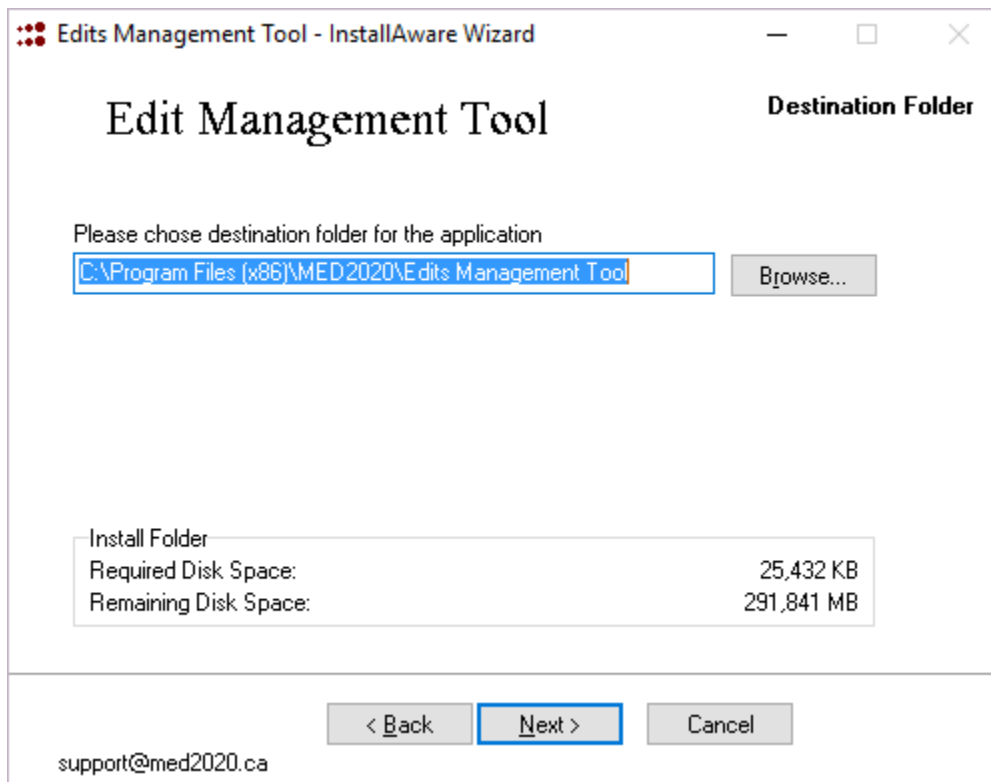


**Note:** EMT Client is compatible with WinRecs 293.2 and higher. If WinRecs version is lower, please upgrade WinRecs before continuing with installation.



Default folder path for client install is C:\Program Files (x86)\MED2020\Edit Management Tool. Edit if required.

Click **Next >**



Edits Management Tool - InstallAware Wizard

## Edit Management Tool

Destination Folder

Please chose destination folder for the application

C:\Program Files (x86)\MED2020\Edits Management Tool

Browse...

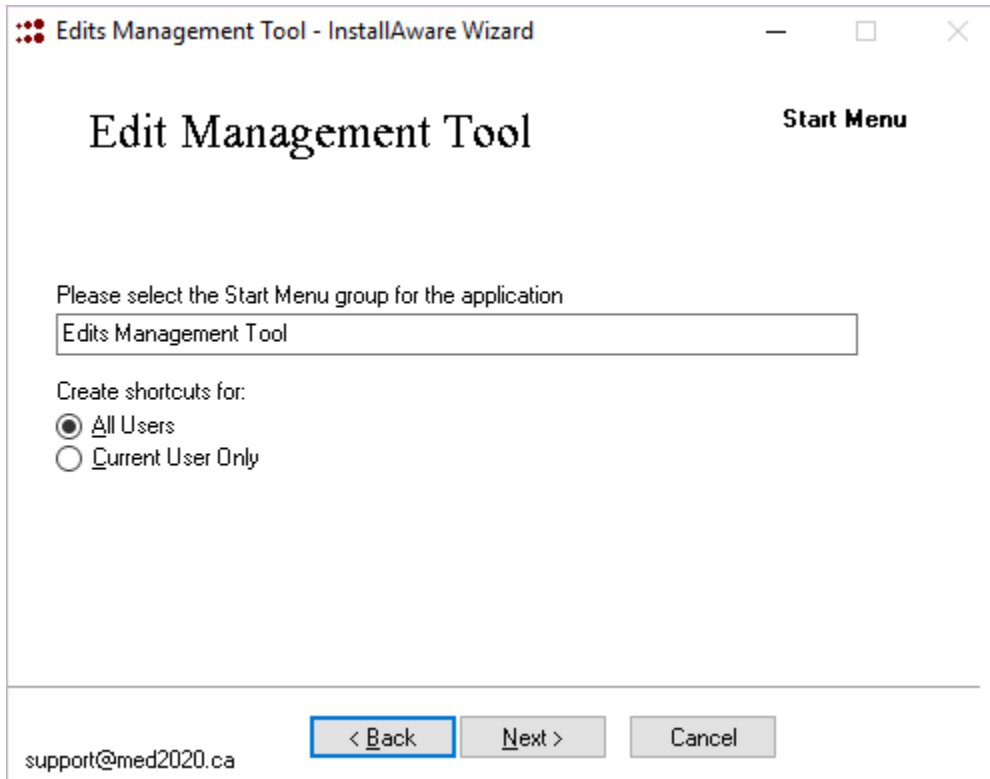
Install Folder

Required Disk Space:	25,432 KB
Remaining Disk Space:	291,841 MB

< Back   **Next >**   Cancel

support@med2020.ca

Shortcuts created for all users by default. Please edit it if required. Click **Next >**



Edits Management Tool - InstallAware Wizard

## Edit Management Tool

Start Menu

Please select the Start Menu group for the application

Edits Management Tool

Create shortcuts for:

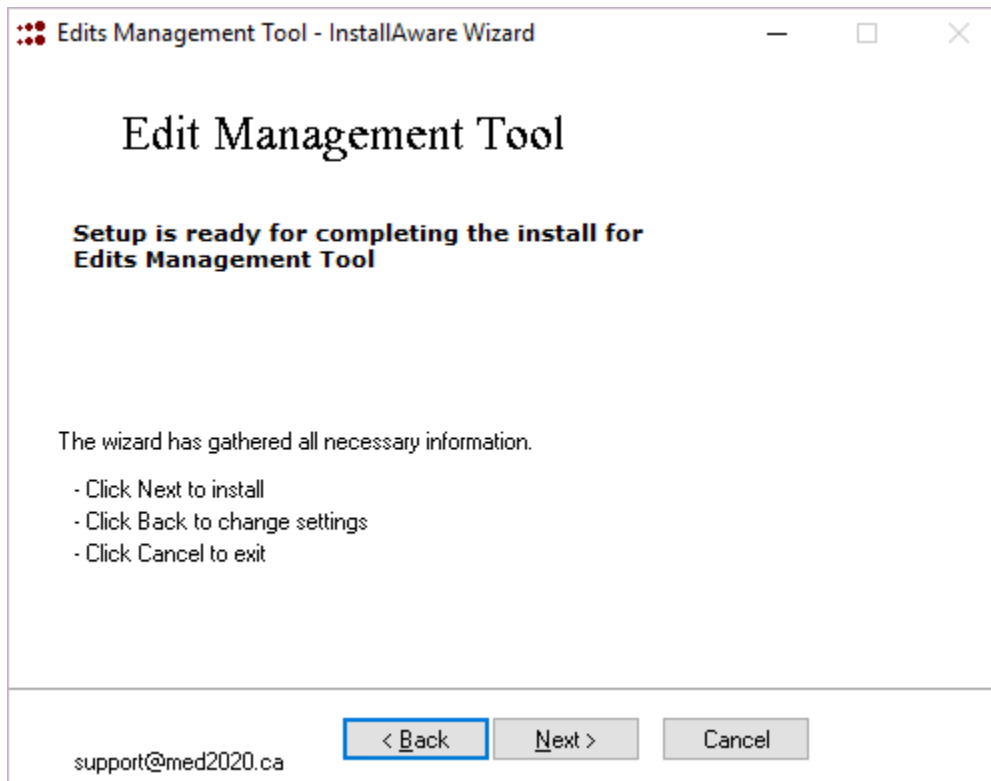
☒ All Users

☐ Current User Only

support@med2020.ca

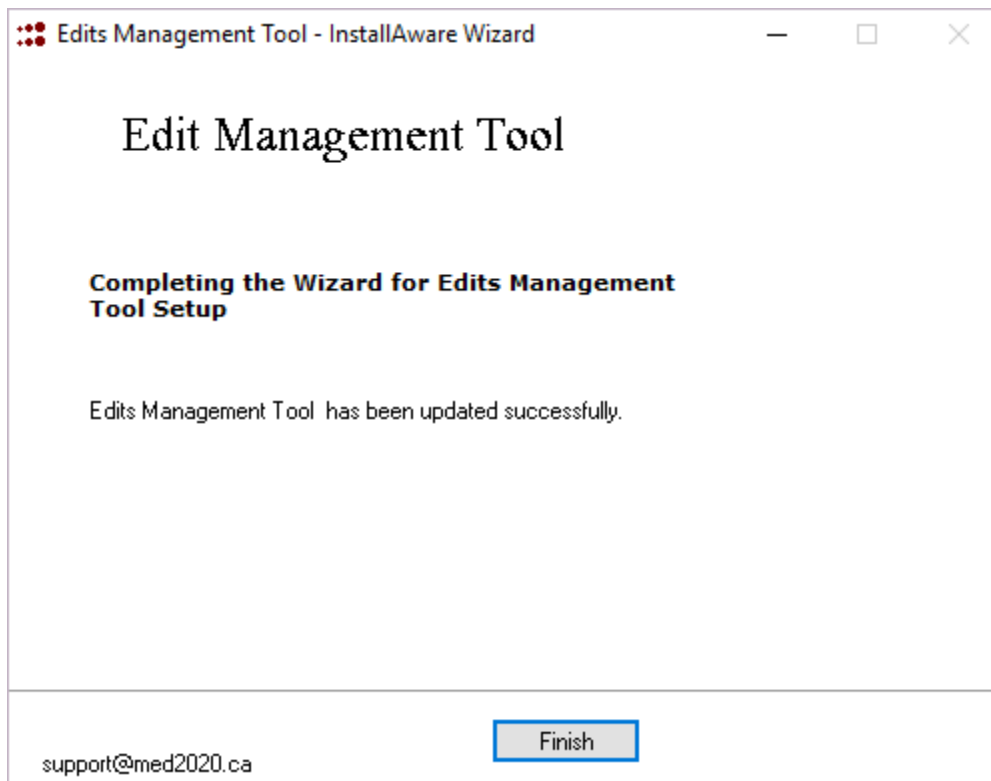
< Back Next > Cancel

Setup is now complete; click **Next >** to begin client install

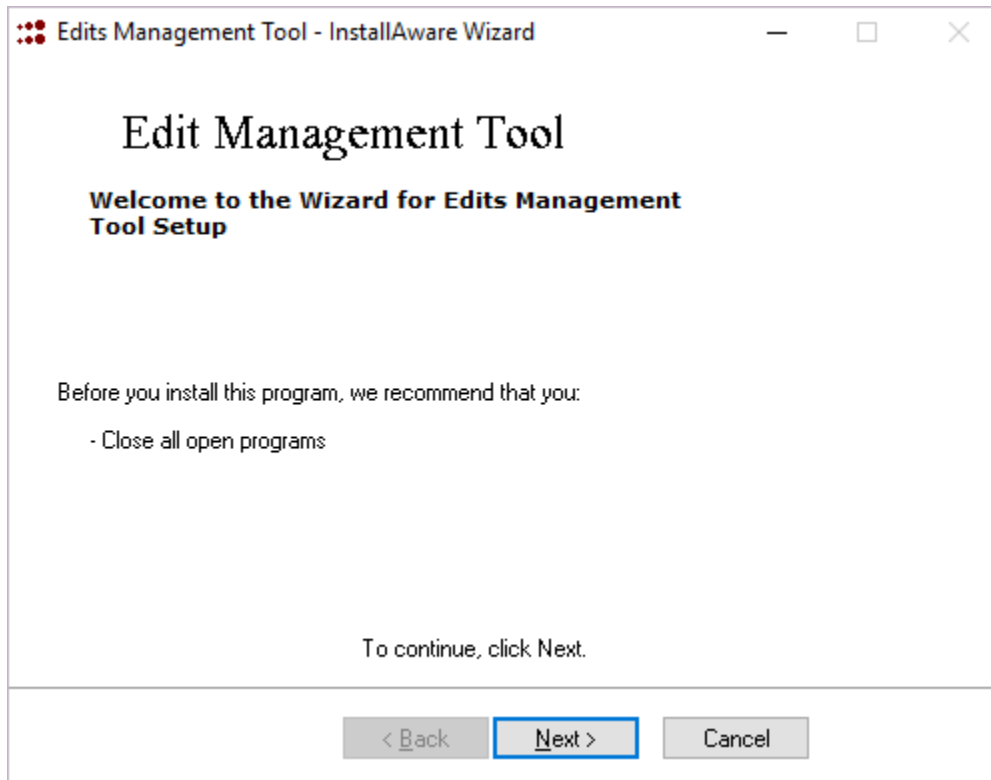


Install process commences.

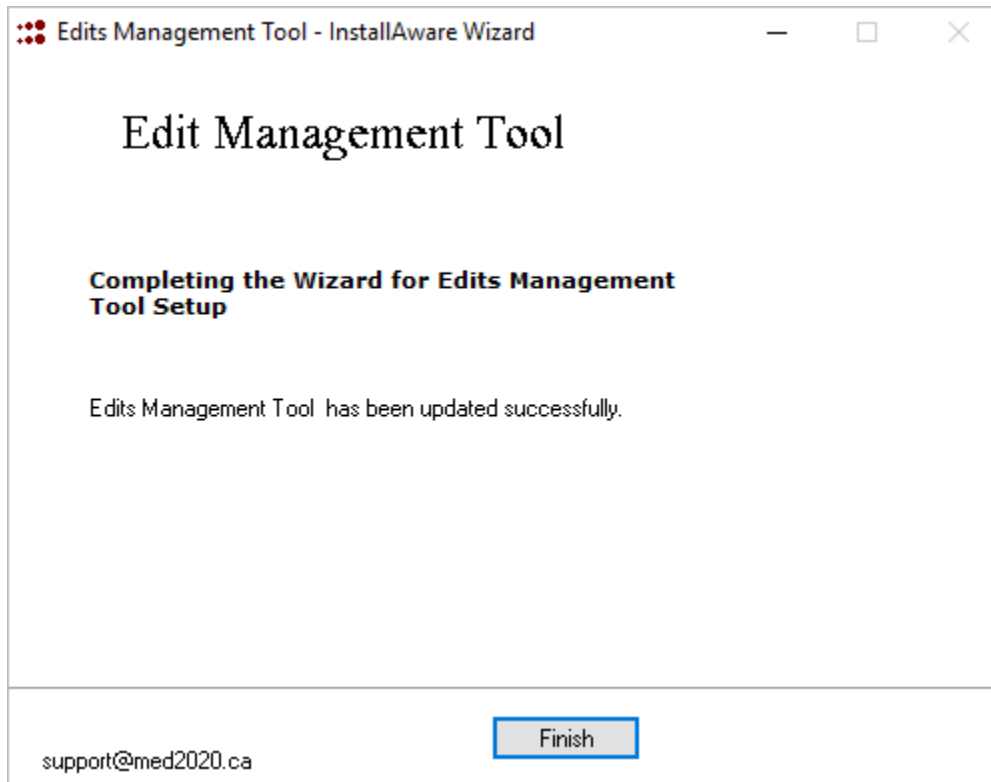
When client install is completed you will see the below screen. Click **Finish**



If you have a previous install of Edit Engine, the installation wizard will appear as follows when it launched:



The installation continues and when finished you will see the following screen. Click **Finish**



This page is intentionally left blank