



2023

Edits Management Tool Installation Guide

March 2023

MED2020 Health Care Software Inc.

MED2020 Health Software Inc. (MED2020) is the leading provider of modular health information management solutions for the Canadian health care industry and is headquartered in Ottawa, Ontario. Solutions are offered to assist in capturing, reporting and analyzing health data to support enhanced information sharing, encourage informed decision making and streamline facility operations. MED2020's flagship product, WinRecs, is the foundation for a complementary suite of modules that have also been designed to assist health information management departments with their operational needs.

Contact Details

MED2020 is open Monday to Friday between 07:00 and 19:00 (Eastern Time), except Canadian federal holidays and Ontario provincial holidays.

Head Office

MED2020 Health Care Software Incorporated
4471 Innes Road, Suite #200
Ottawa, Ontario
K4A 3J7

Tel: (613) 830-3761
Fax: (613) 830-2410
Toll Free: (800) 461-2020

E-mail: support@med2020.ca
Web: <http://www.med2020.ca>

End-User License Agreement

MED2020 proprietary rights are included in the information disclosed in this manual.

Permission to reprint this document is provided to facilities and users of a licensed MED2020 **WinRecs™** applications, provided the document is complete and its contents remain unaltered. No proof of status is required.

Neither this document nor the information disclosed herein, or any part thereof, shall be transferred to other documents, used by, or disclosed to other parties for any purpose except as explicitly authorized by MED2020 Health Care Software Inc.

MED2020 Health Care Software Inc. cannot give permission for use of any third-party content.

Table of Contents

1	INTRODUCTION	5
2	ADD OR REMOVE PROGRAM	5
3	CLIENT INSTALLATION.....	5
4	USER PROFILE	10

1 Introduction

READ THIS SECTION BEFORE INSTALLING ANY SOFTWARE

This document was written for a moderately technical audience. It is assumed throughout the document that the user is familiar with the fundamental concepts with respect to file and computer.

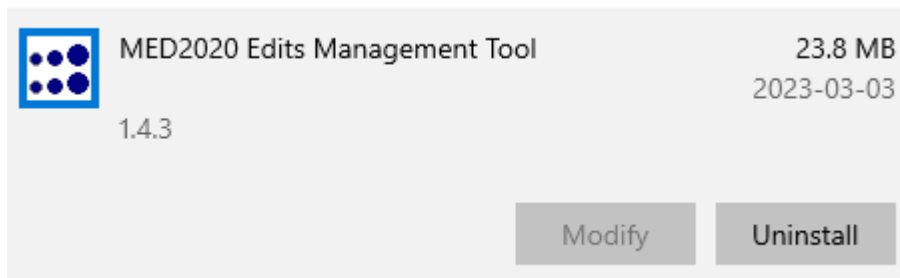
The information contained in this document is provided to assist with the installation of Edit Engine. This installation assumes that WinRecs 292.3 is already installed.

Contact MED2020 [Client Services](#) for more assistance with any information contained in this document.

2 Add or Remove Program

If Edits Management Tool is already installed, need to uninstall.

To uninstall, go to Add or Remove Programs look for App called MED2020 Edits Management Tool and click 'Uninstall'.



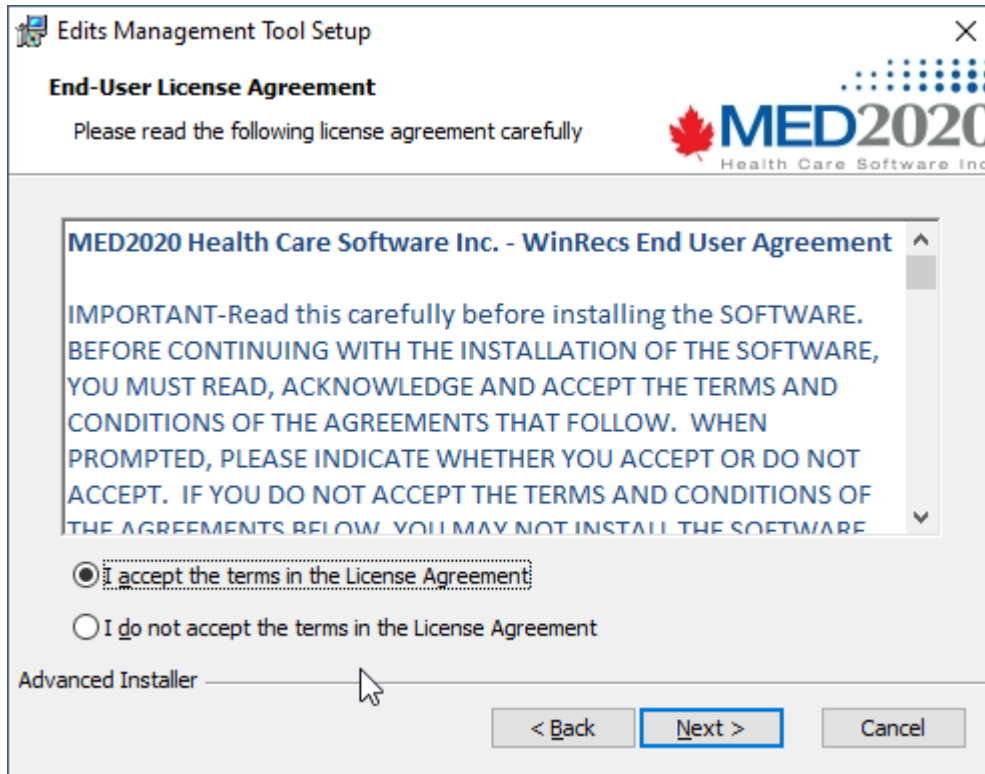
3 Client Installation

To install the Edits Management Tool client run WinRecs2_EMT_Setup.exe

Install package opens.

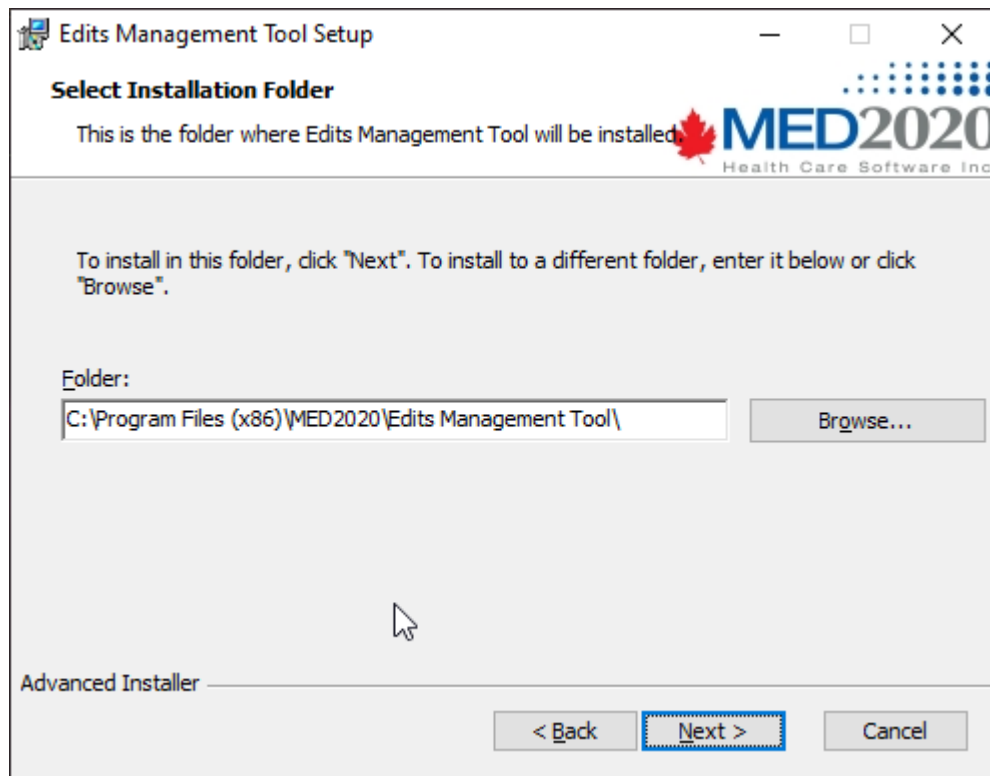


Click **Next >**



Ensure check box "I accept the license agreement" is checked and click **Next >**

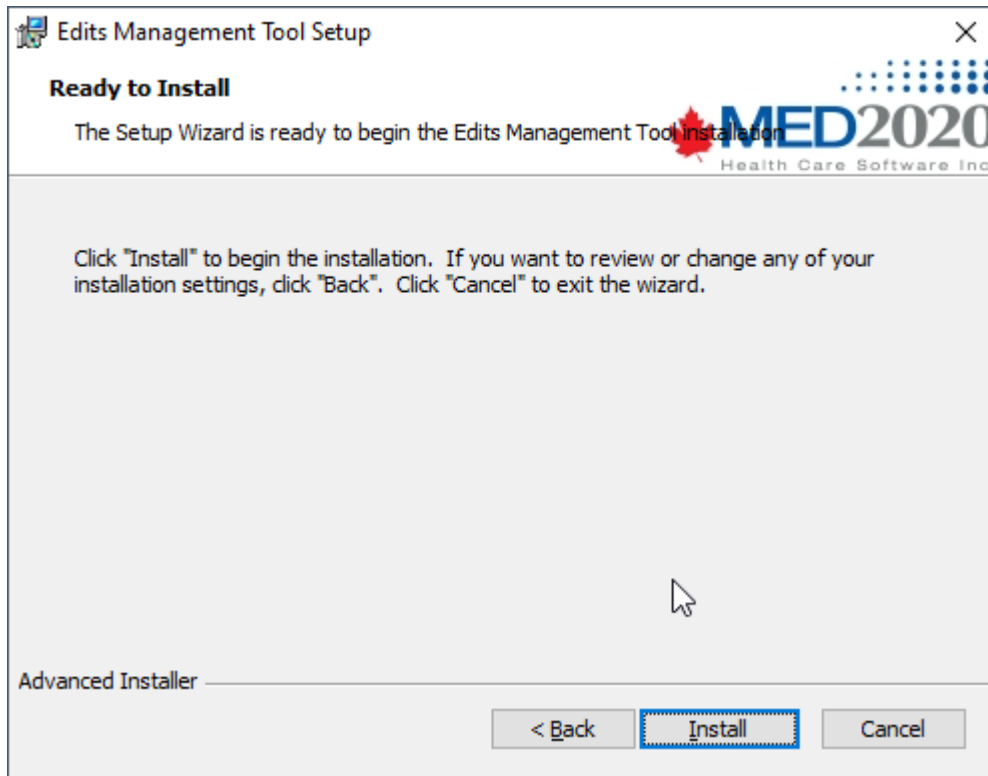
Note: Edit Engine Client is compatible with WinRecs 299.0 and higher. If WinRecs version is lower, please upgrade WinRecs before continuing with installation



Default folder path for client install is C:\Program Files (x86)\MED2020\Edits Management Tool\.

Edit if required.

Click **Next >**



Click **Install**>



4 User Profile

The user who will be responsible for creating the edits will need to be set up in user profile to access the Edits Management Tool. Two fields in User Profile

- Can modify Edits Management Tool (EMT): Y-Yes
- Edits Management Tool (EMT) File Path: C:\Program Files (x86)\MED2020\Edits Management Tool\MED2020.Winrecs.EMT.exe

File Actions Modules Help

WinRecs® Application Menu [Ctrl + M]

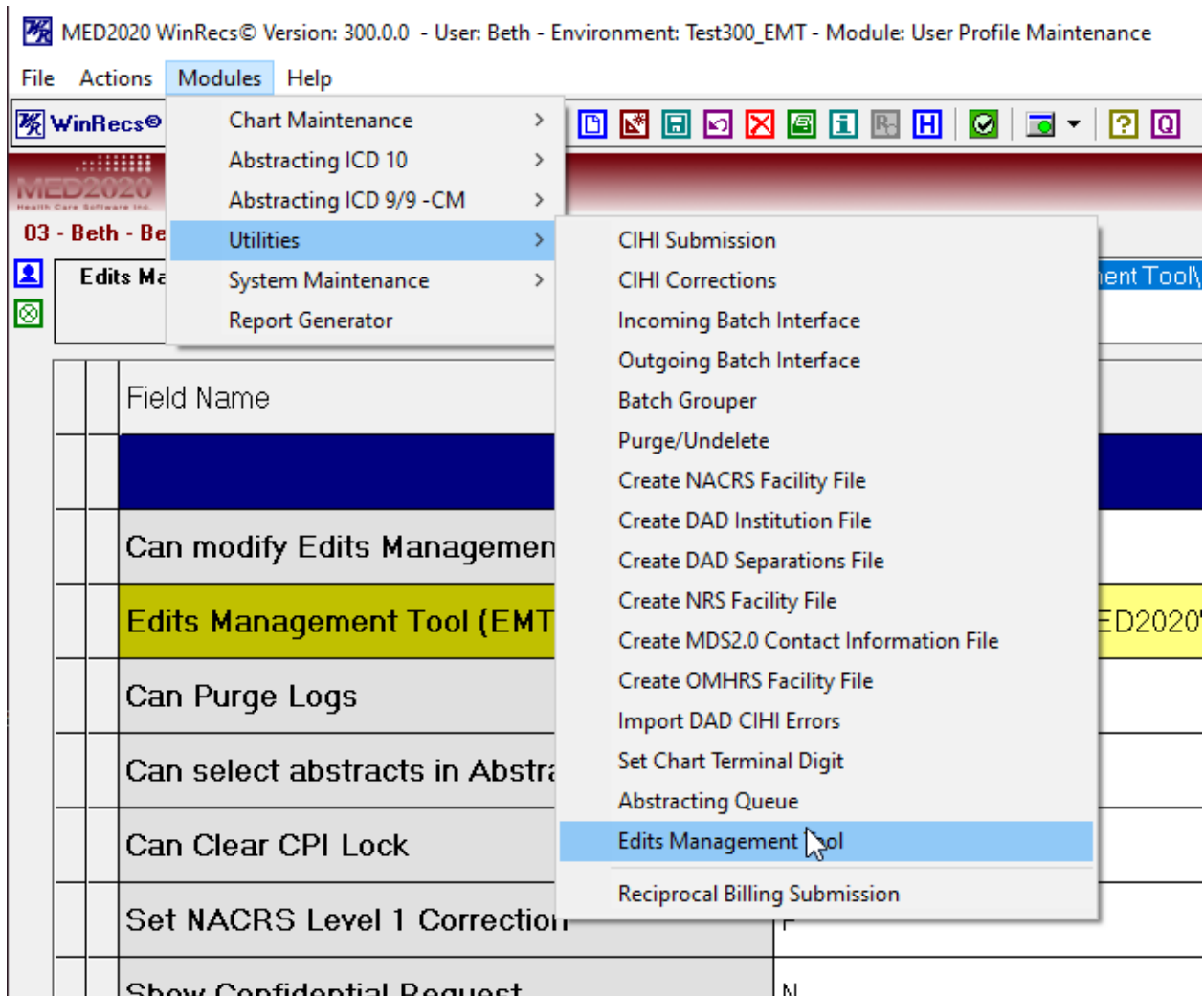
03 - Beth - Beth

Edits Management Tool (EMT) File Path C:\Program Files (x86)\MED2020\Edits Management Tool\MED2020.Winrecs.EMT.exe

Field Name	Field Value	Field Description
User's Profile		
Can modify Edits Management Tool (EMT)	Y	Yes
Edits Management Tool (EMT) File Path	C:\Program Files (x86)\MED2020\Edits Management Tool\MED2020.Winrecs.EMT.exe	
Can Purge Logs	Y	Yes

Access to Edits Management Tool

Modules>Utilities>Edits Management Tool



Edits Management Tool will launch

Winrecs Tools - EMT Editor [Version 1.4.3 [Build 01]]

Condition Editors

Select Module

+ New [F5] X Delete [F9]

Enter a value here to filter the list

Edit name

Save [F7]

Edit rule severity

☐ Critical
☐ Error
☐ Warning
☐ Information

Message content

Condition type to evaluate edit

☐ Field Condition Valid from: ____/____/____
☐ Logical Condition Valid to: ____/____/____

This page is intentionally left blank