

## Applying Updates for WinRecs 295.1.0



## **MED2020 Health Care Software Inc.**

MED2020 Health Software Inc. (MED2020) is a leading provider of modular health information management solutions for the health care industry and is headquartered in Ottawa, Ontario. Solutions are offered to assist in capturing, reporting and analyzing health data to support enhanced information sharing, encourage informed decision making and streamline facility operations. MED2020's flagship product, WinRecs™, is the foundation for a complementary suite of modules that have also been designed to assist health information management departments with their operational needs.

## **Contact Details**

Should you have any questions regarding the content of this user guide, please do not hesitate to contact MED2020 Client Services with the contact information below:

### **Head Office**

4471 Innes Rd., Suite 200  
Ottawa, Ontario  
K4A 1A7

Toll Free: (800) 461-2020

Tel: (613) 830-3761

Fax: (613) 830-5992

### **Our regional offices located in Manitoba and British Columbia**

Email: [support@med2020.ca](mailto:support@med2020.ca) Web: <http://www.med2020.ca>

## Table of Contents

Before You Begin...	5
Running Update .....	5
Types of Updates.....	8
Option 1: Workstation Update .....	9
Option 2: Database Update.....	12
Option 3: Complete Update.....	18
Option 4: Customized Update .....	24
Documentation.....	25
dbresults.xml .....	25

## About This Document

The information contained in this document focuses on applying updates for WinRecs.

To learn more about using WinRecs please refer to the WinRecs User Guide, also available as a download from the MED2020 Client site, located in Documentation Folders within the Update Folders at:

<ftp://web.med2020.ca/WR2Update/>

## Document Conventions

Throughout this Technical Guide, text formatting is used to complement the information provided.

**Function keys and key sequences are distinguished by large bold text.**

Example: **CTRL+M**

*References to modules, functions and other values as displayed on the screen are distinguished by italic text.*

Example: *WinRecs Application Menu*

**File names, paths and cross-references to other sections of the User Guide are distinguished by bold text.**

Example: **Command line used for installing SQL Server**

Example: **D:\setup.exe /template.ini**

Values to be typed are distinguished by the courier font.

Example: Type 01011920 in the field.

**Note:** Important notes and hints are distinguished by blue text with a light gray background.

Example **Note:** This is an important note.

## Before You Begin...

Prior to installing any software, please ensure that you have made backup copies of your sensitive data. Also please ensure that you have your backups readily available, and that you know the exact path to your databases. MED2020 cannot be held responsible for data loss, nor can MED2020 assist with data backup and recovery. Instructions for backup and recovery are outside the scope of this document.

Update your test/live databases as per your usual internal process (turn off HL7 interface during update if applicable) and ensure all users are logged off the system.

**Note:** It is recommended to turn off any antivirus program for the installation as it could interfere and block some of the files and/or processes from completing.

The automated update package is provided in self-extracting EXE and MSI; they can be accessed through the FTP site update folders at: <ftp://web.med2020.ca/WR2Update/>.

**The following are examples for the types of updates:**

<b>292_2_WinRecs_Update.exe</b>	For manual execution on one workstation
<b>292_2_2_WinRecs_Update.msi</b>	For services (i.e. SMS push) to deploy it to multiple workstations

## Running Update

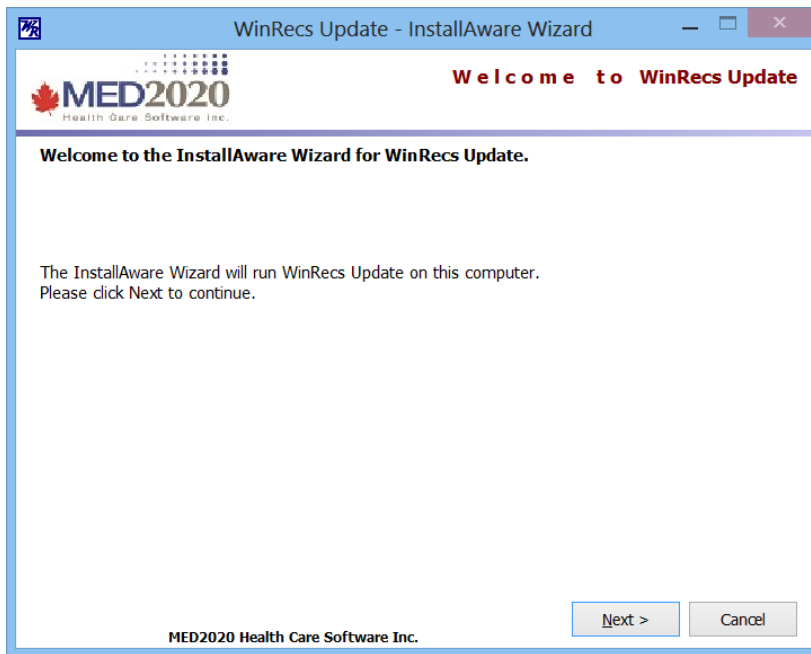
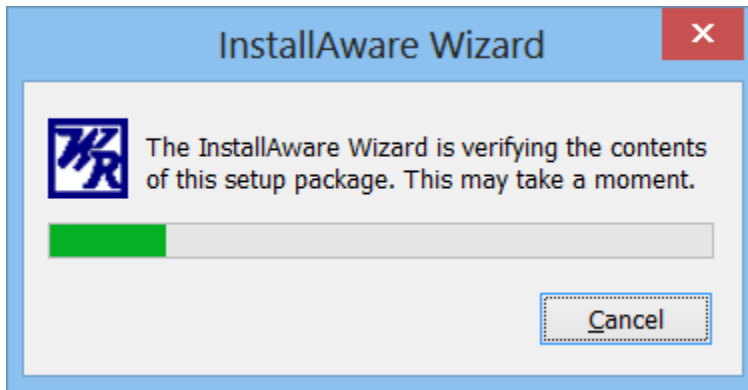
The following applies to the workstation/client portion of the update package:

If local PC user permissions are too restrictive for the “log in/out/in” routine to successfully update the workstation with the latest WinRecs EXE and Grouper DLL, the .exe can be run by any administrator on any workstation with WinRecs already installed to update the installation directory with the necessary files. To assist sites that have many workstations requiring an update, the .msi program has been designed such that it can be included as part of a network “software deployment/push” and installed across a network.

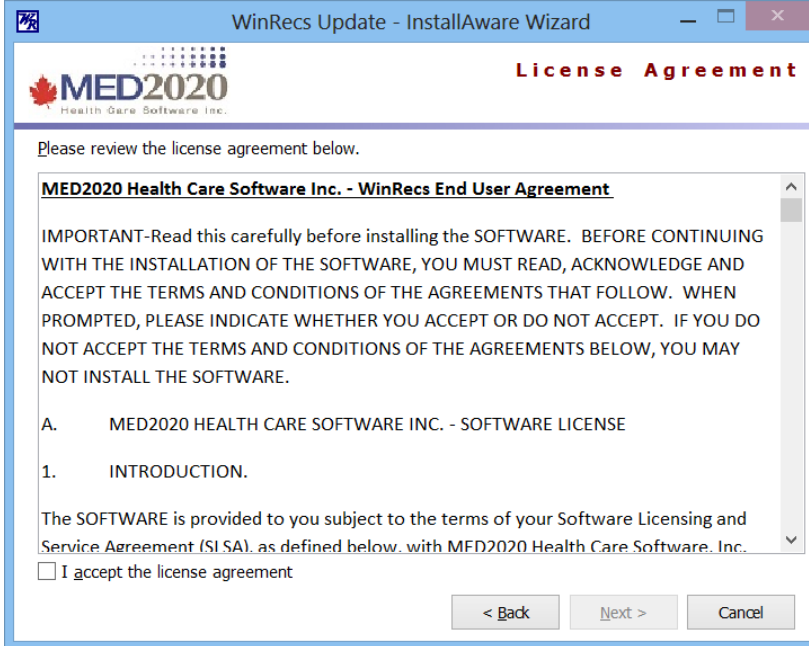
If MSI package is used and “pushed” across the network in silent mode it will automatically perform workstation only update.

**Note:** If you are using the silent install, User Account Control Setting has to be turned off in Client machine in order to make the silent Installation running smoothly. Otherwise the “signed shell” would be pop up in client side when doing network push.

In order to start the update, double click on the WinRecs icon to begin update process.



Click "Next"



WinRecs Update - InstallAware Wizard

**MED2020**  
Health Care Software Inc.

**License Agreement**

Please review the license agreement below.

**MED2020 Health Care Software Inc. - WinRecs End User Agreement**

IMPORTANT-Read this carefully before installing the SOFTWARE. BEFORE CONTINUING WITH THE INSTALLATION OF THE SOFTWARE, YOU MUST READ, ACKNOWLEDGE AND ACCEPT THE TERMS AND CONDITIONS OF THE AGREEMENTS THAT FOLLOW. WHEN PROMPTED, PLEASE INDICATE WHETHER YOU ACCEPT OR DO NOT ACCEPT. IF YOU DO NOT ACCEPT THE TERMS AND CONDITIONS OF THE AGREEMENTS BELOW, YOU MAY NOT INSTALL THE SOFTWARE.

A. MED2020 HEALTH CARE SOFTWARE INC. - SOFTWARE LICENSE

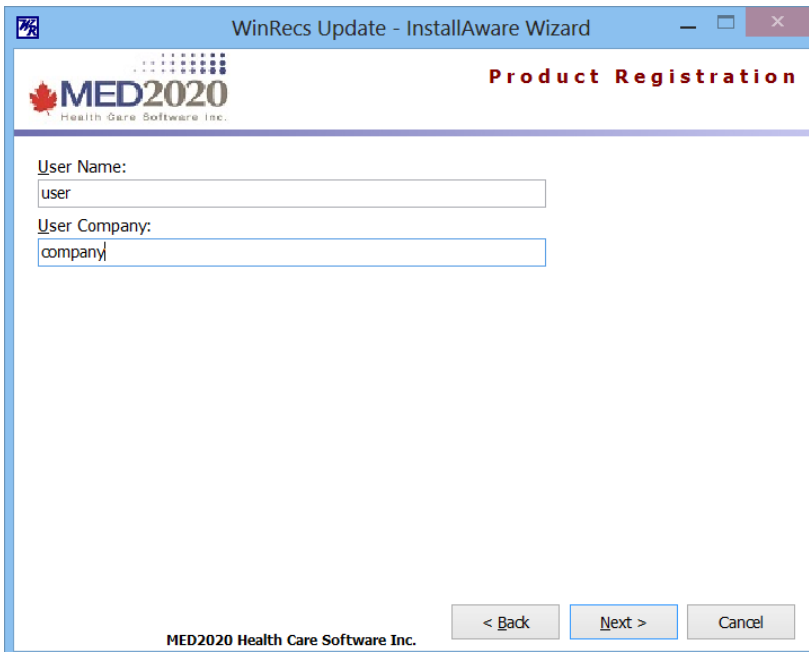
1. INTRODUCTION.

The SOFTWARE is provided to you subject to the terms of your Software Licensing and Service Agreement (SLSA), as defined below, with MED2020 Health Care Software, Inc.

☐ I accept the license agreement

< Back Next > Cancel

Accept the license agreement and click “Next”



WinRecs Update - InstallAware Wizard

**MED2020**  
Health Care Software Inc.

**Product Registration**

User Name:  
user

User Company:  
company

MED2020 Health Care Software Inc.

< Back Next > Cancel

Type in your User Name and User Company and click “Next”.

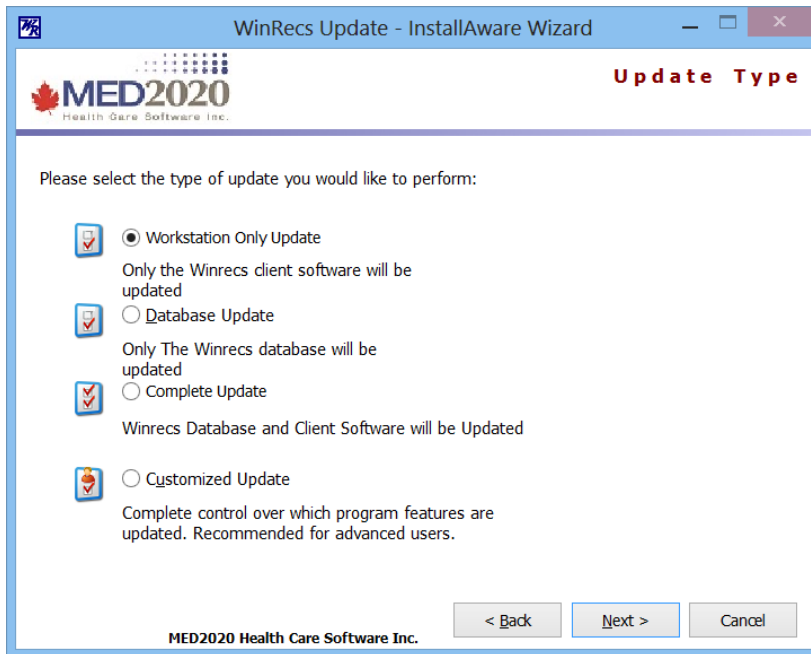
## Types of Updates

Once you get to this screen you have multiple options, each taking you to the different parts of the document

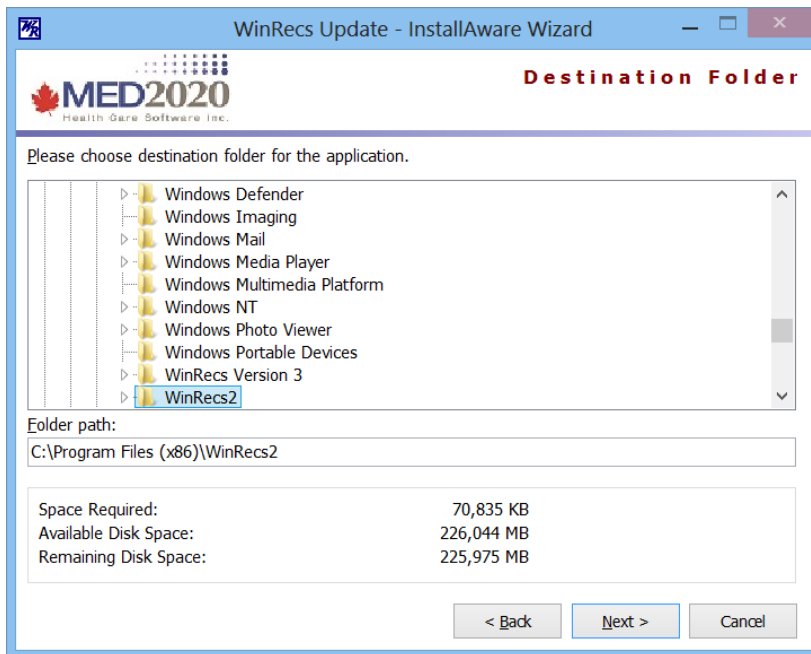
- 1) Update the WinRecs client (Option 1: Workstation Only Update)
- 2) Update the WinRecs database only (Option 2: Database Update)
- 3) Update the WinRecs database and the client (Option 3: Complete Update)
- 4) Update WinRecs database (Option 4: Customized Update)



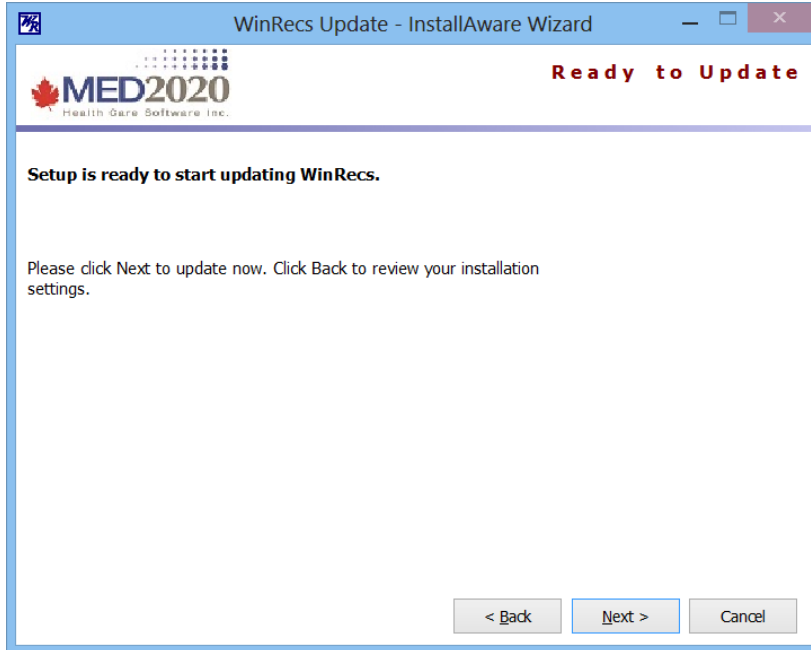
## Option 1: Workstation Update



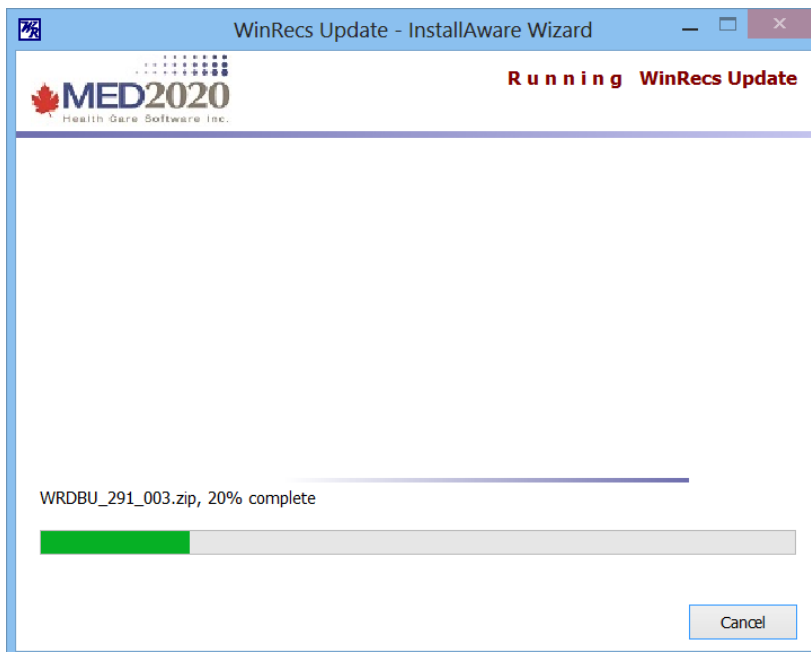
Click "Next"

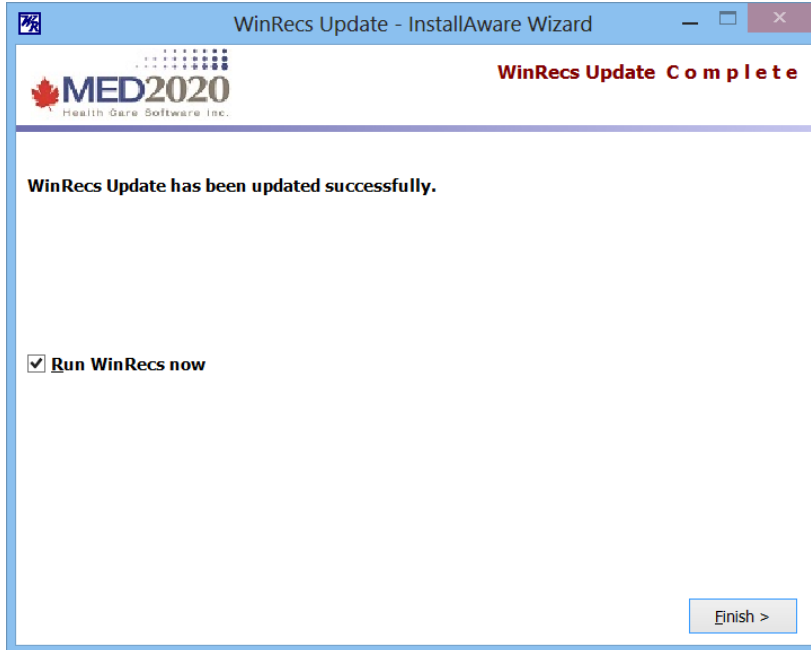


Navigate to the location where WinRecs is already installed and click "Next"



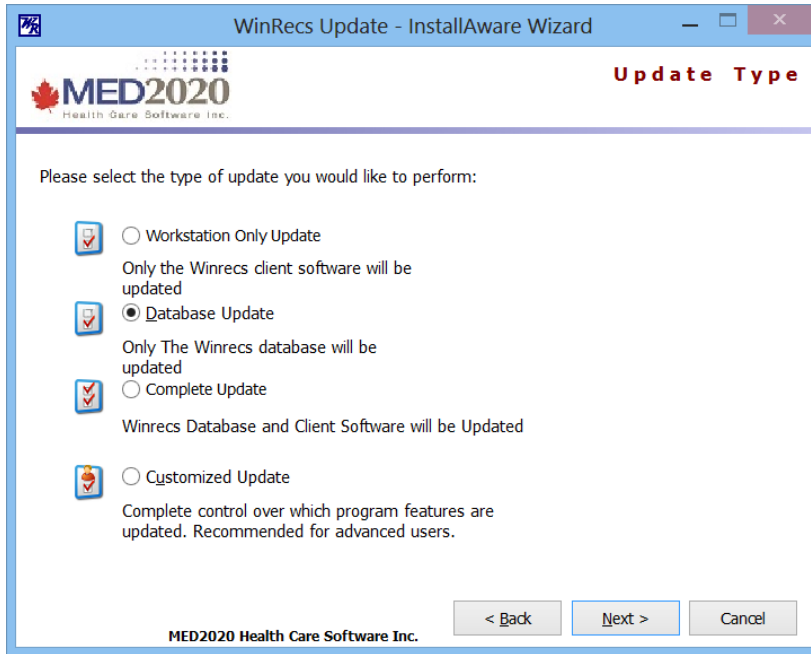
Click "Next"



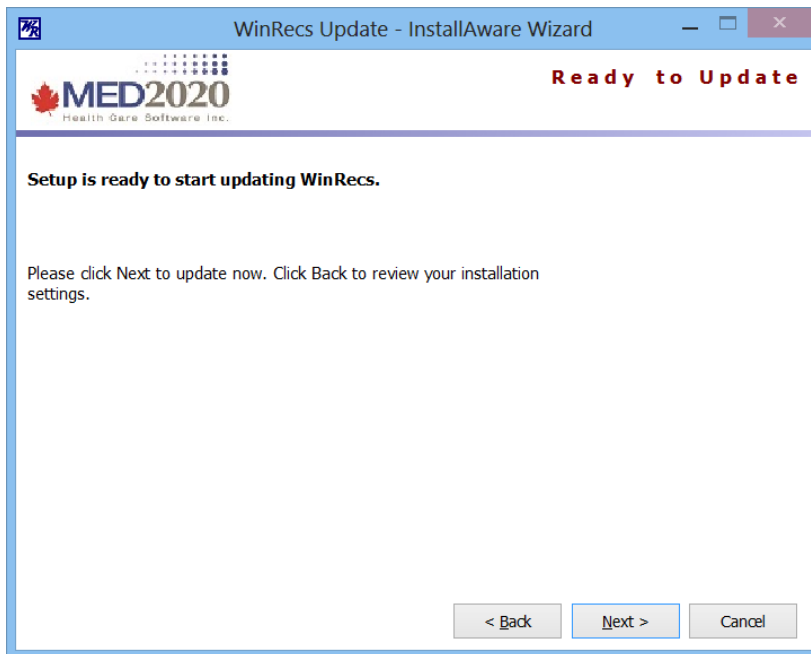


Your update is complete.

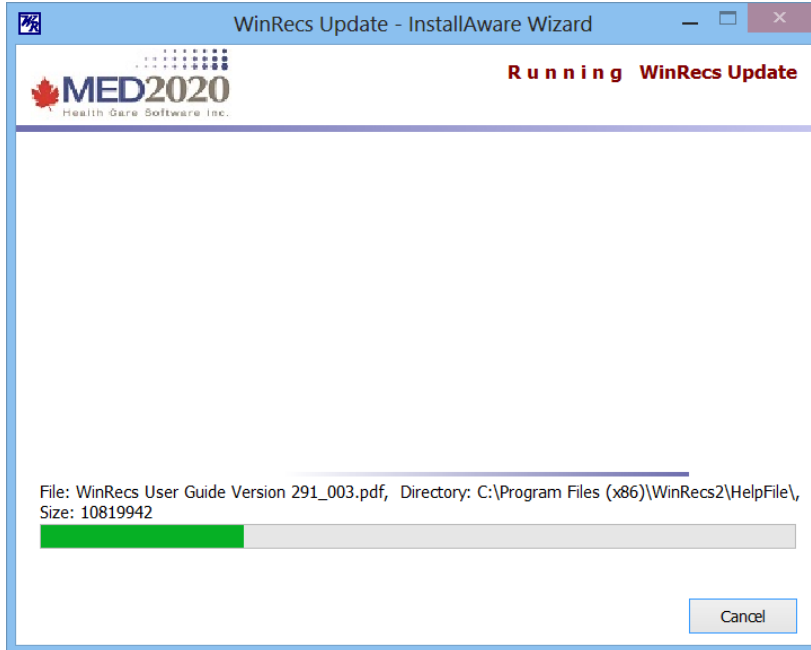
## Option 2: Database Update



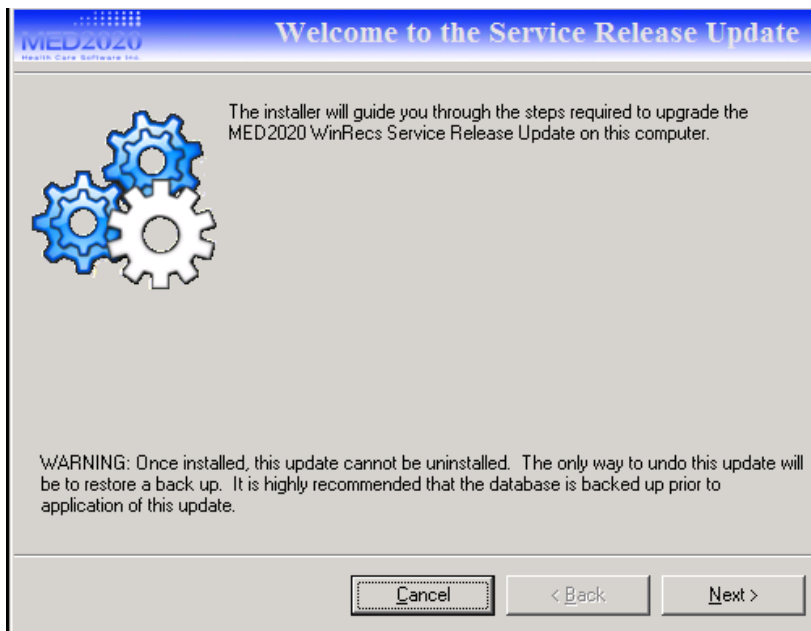
Click "Next"



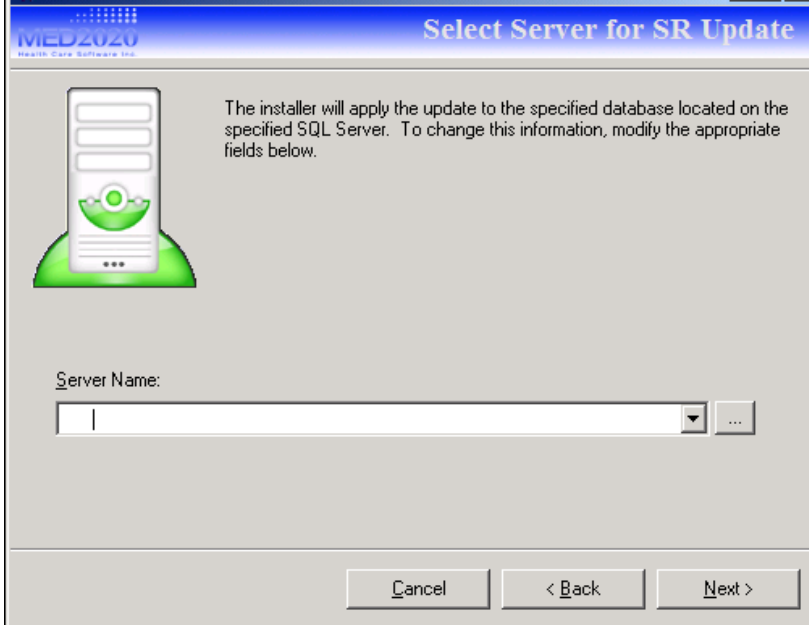
Click "Next"



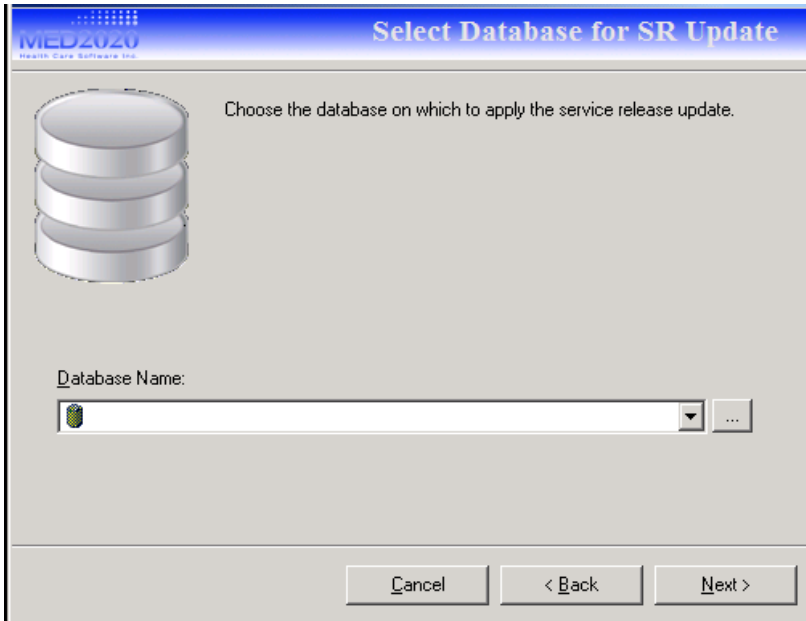
Next you will be directed to the database update.



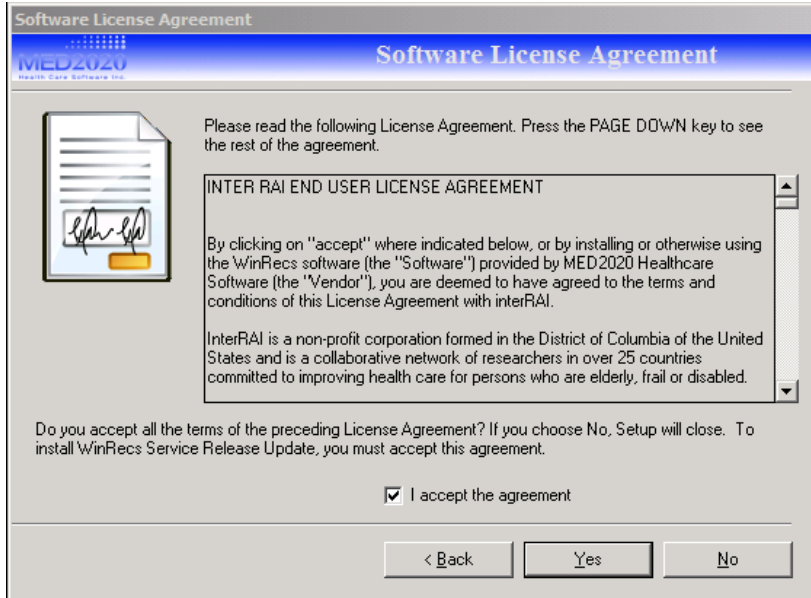
Once the WinRecs update begins; Click "Next"



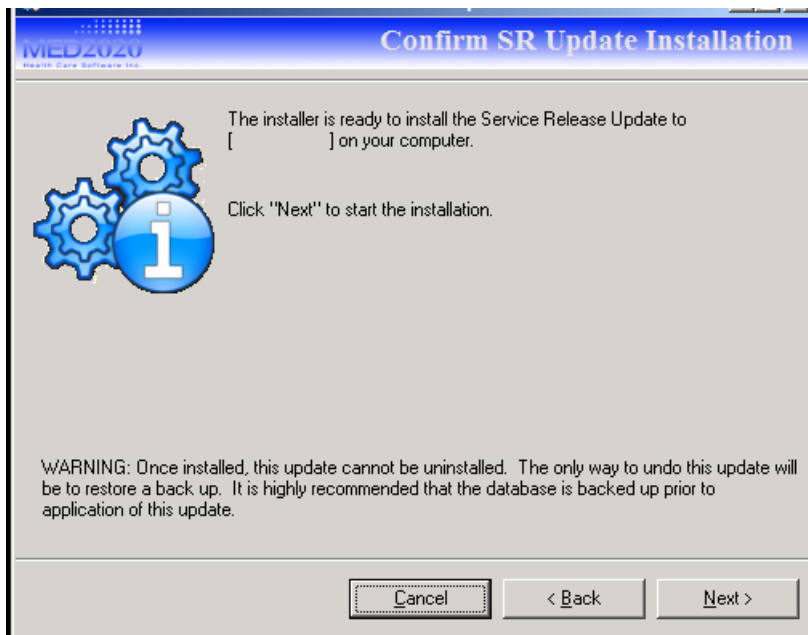
Select your server from the drop down menu or enter it manually;  
Click “Next”



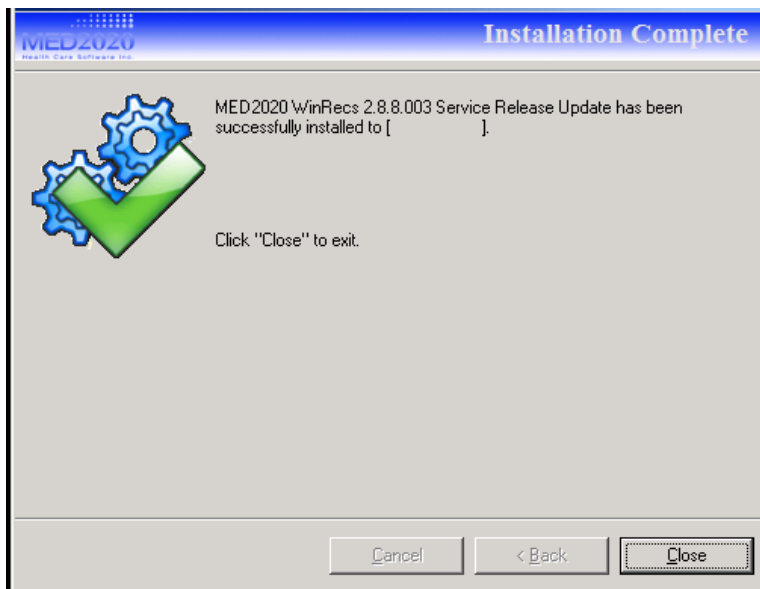
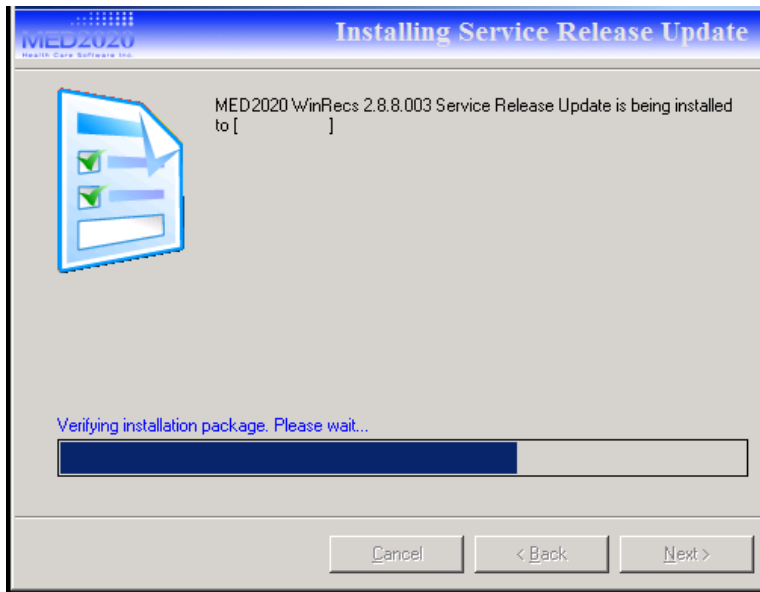
Select your database from the drop down menu or enter it manually;  
Click “Next”



Accept the terms and click "Next".



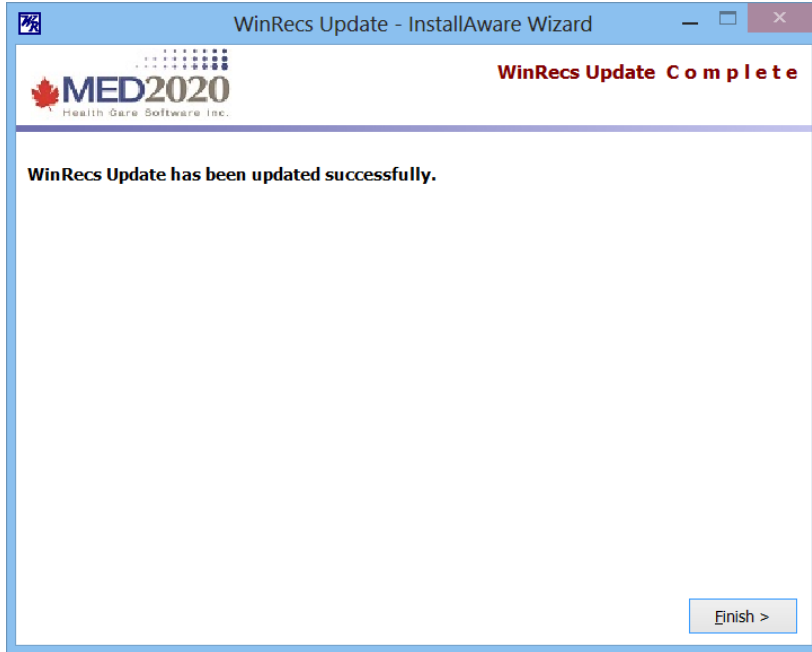
Click "Next".



Update is complete; click "Close"

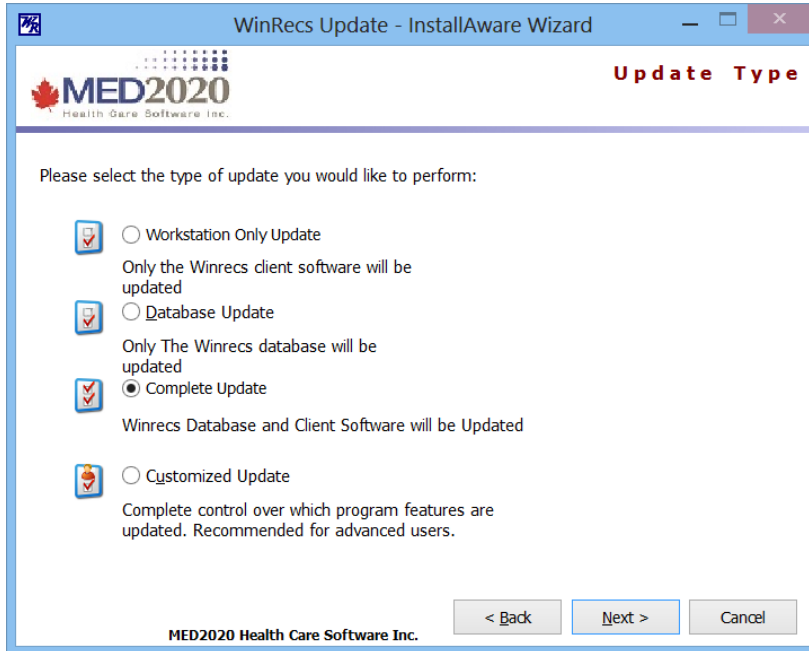
For additional databases the update should be relaunched following the same steps.



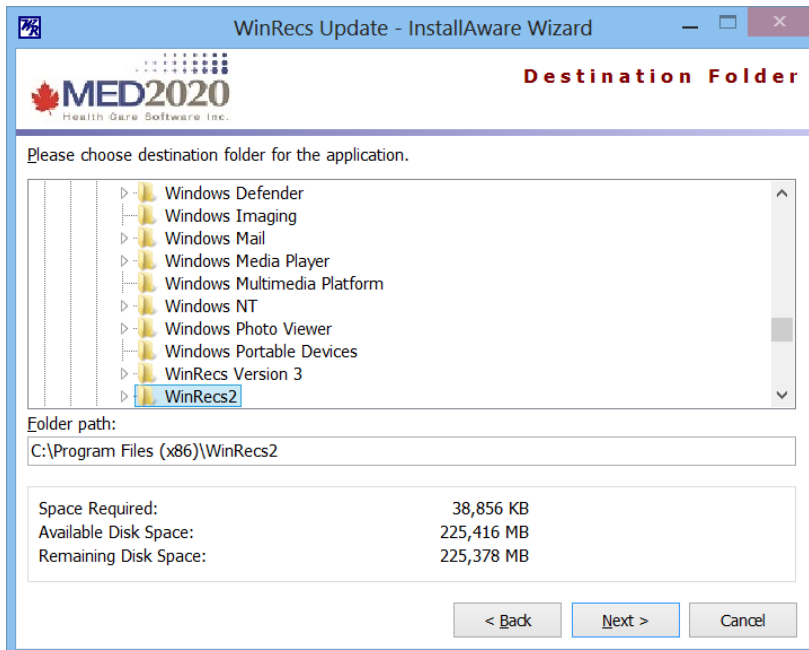


Click the Finish button.

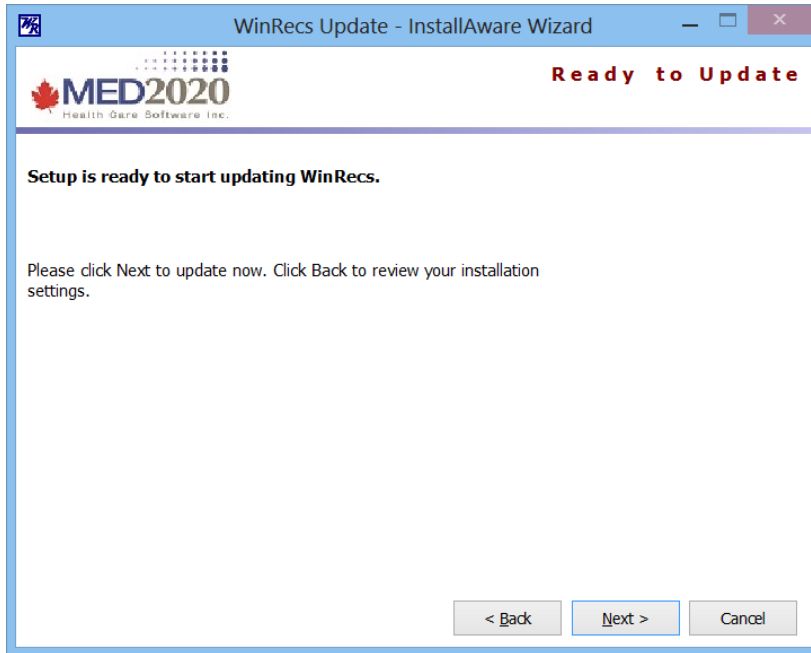
### Option 3: Complete Update



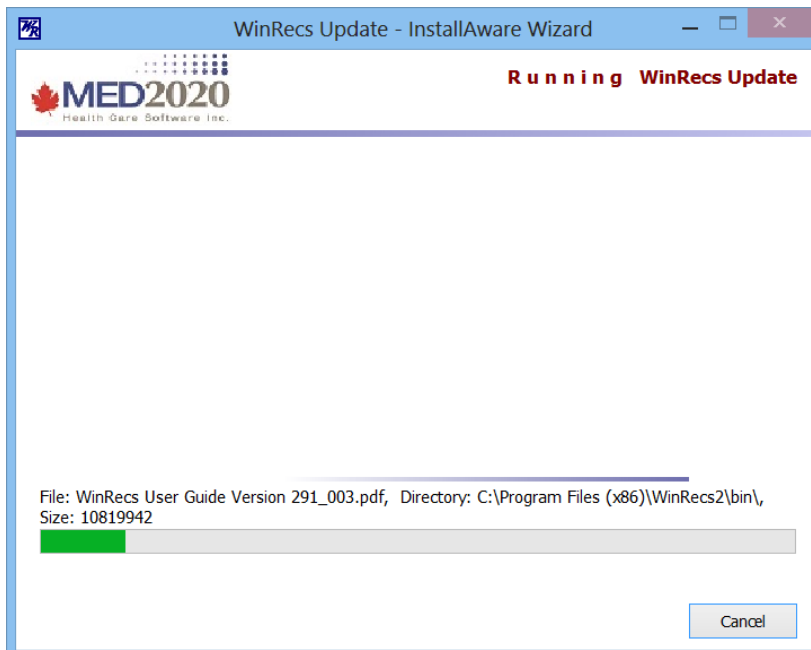
Click "Next"



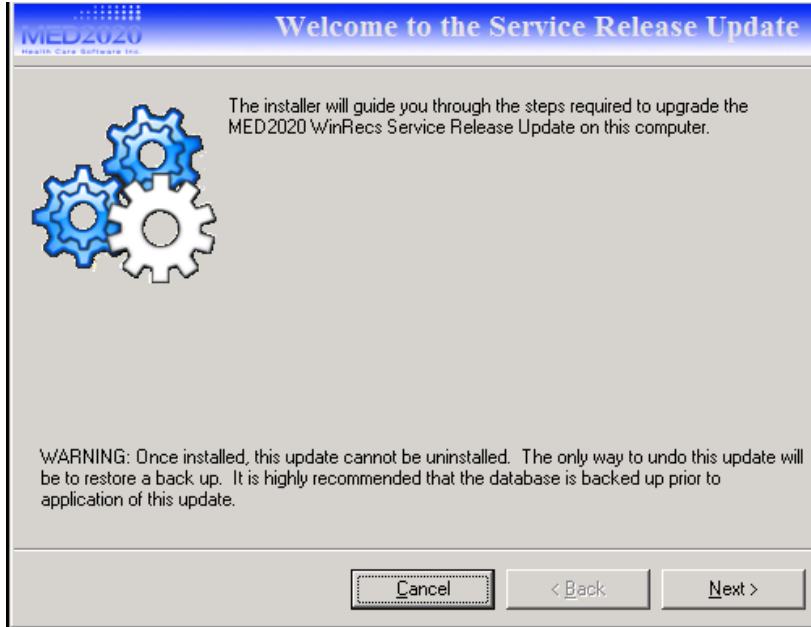
Navigate to the location where WinRecs is already installed and click "Next".



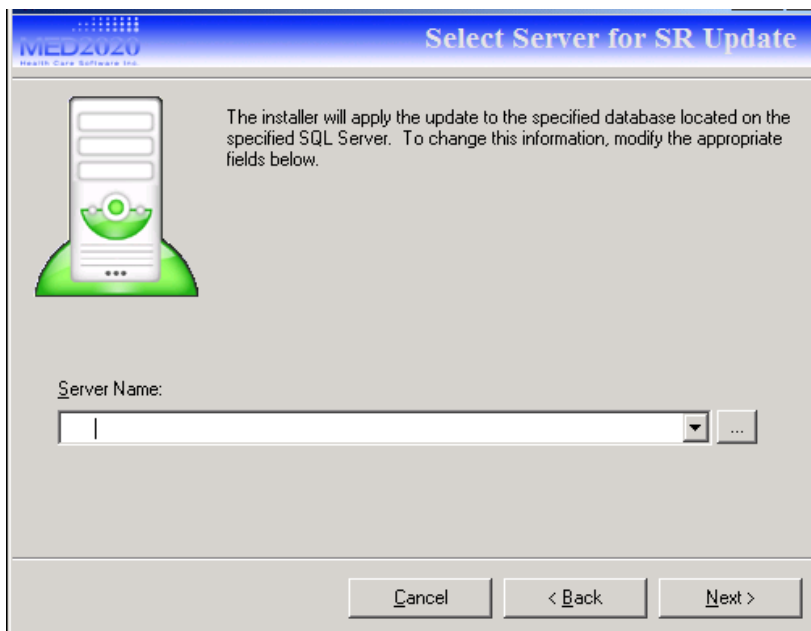
Click "Next".



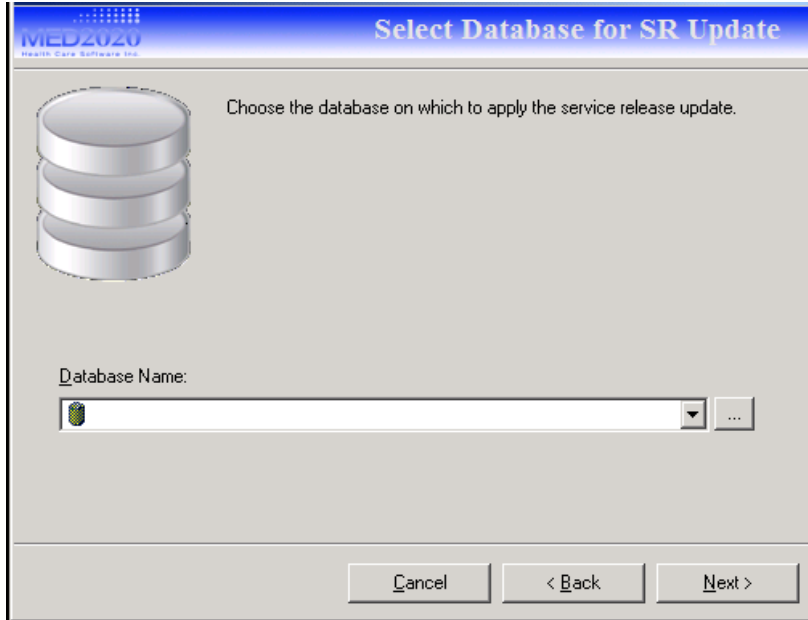
Next you will be directed to the database update.



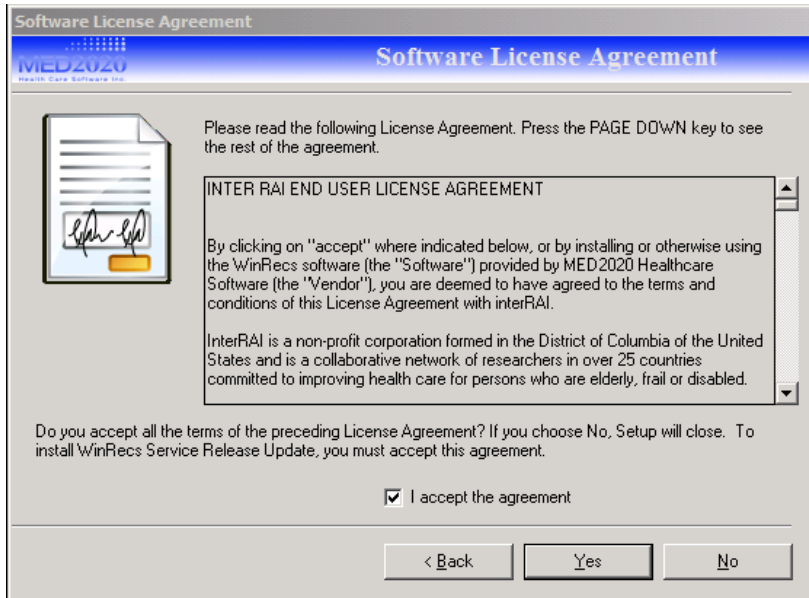
Once the WinRecs update package begins; Click "Next"



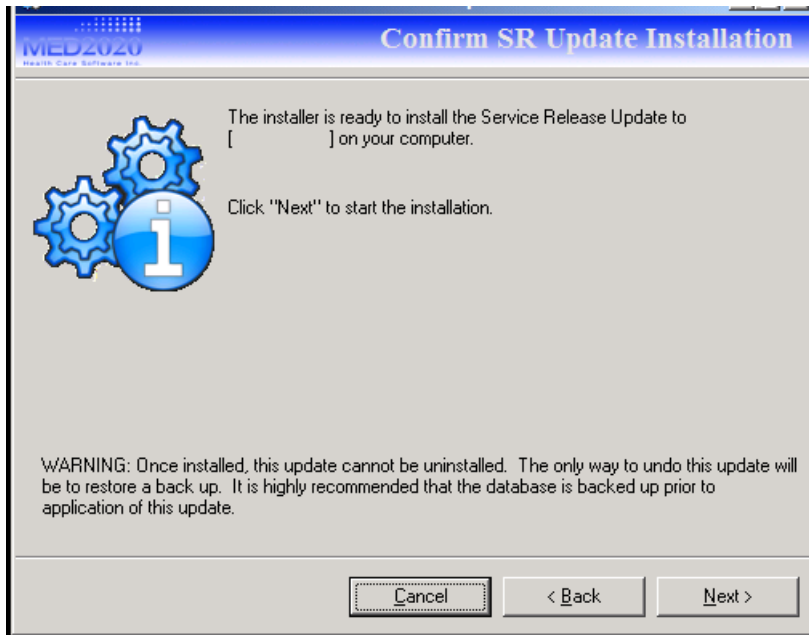
Select your server from the drop down menu or enter it manually;  
Click "Next"



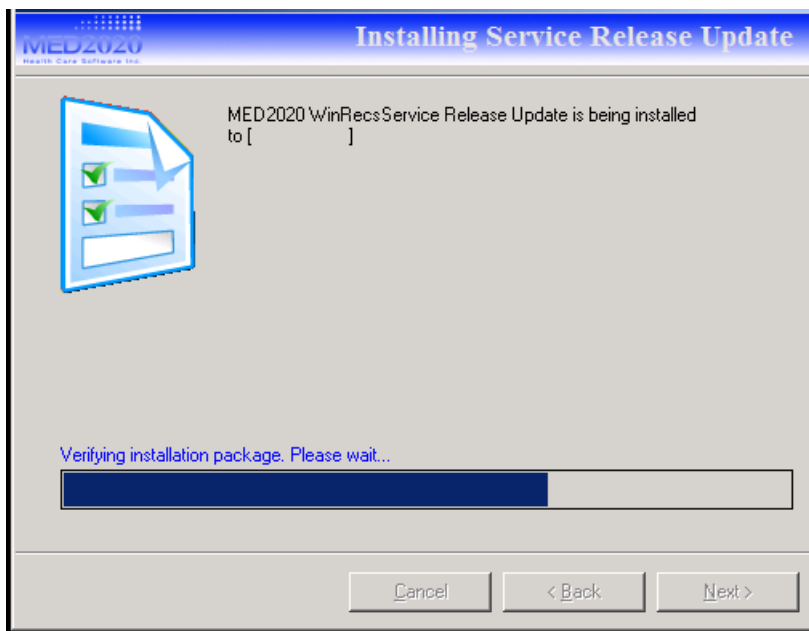
Select your database from the drop down menu or enter it manually;  
Click "Next"

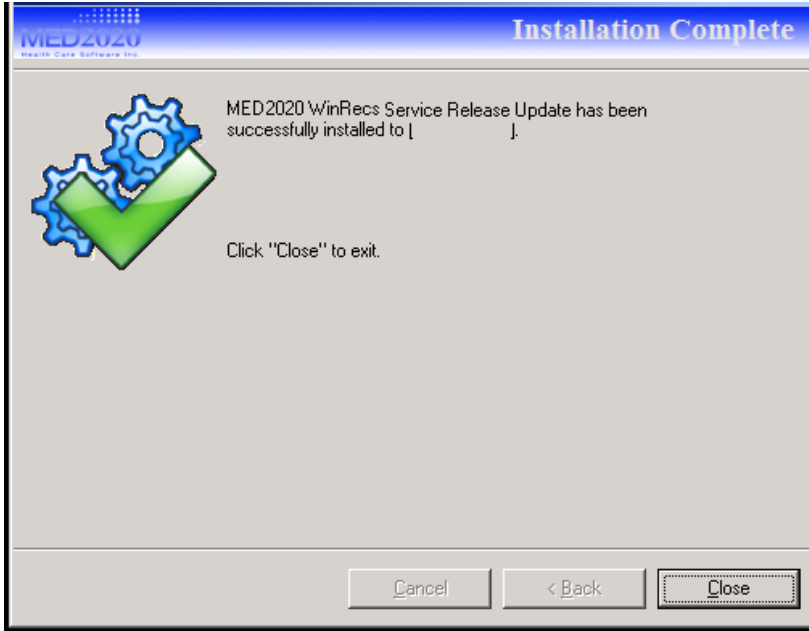


Accept the terms and click "Next".



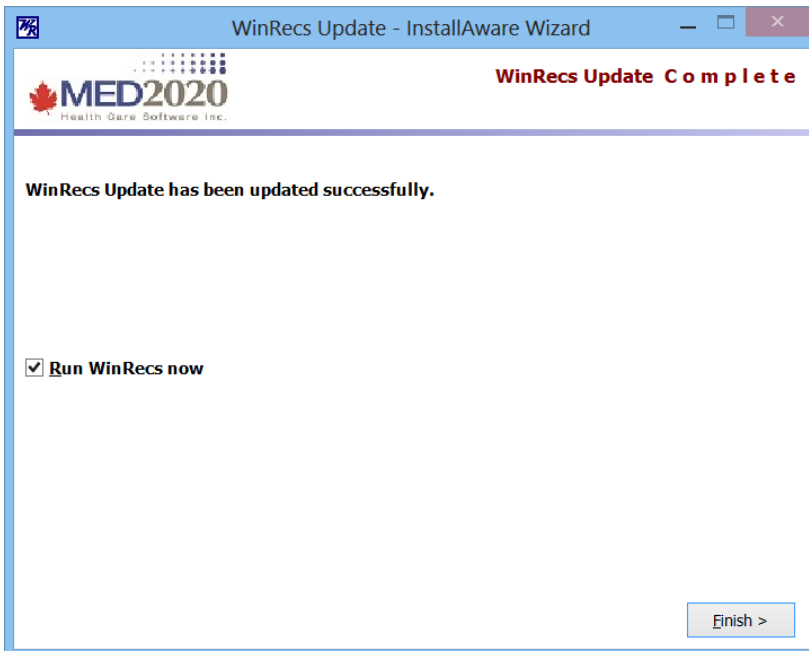
Click "Next"





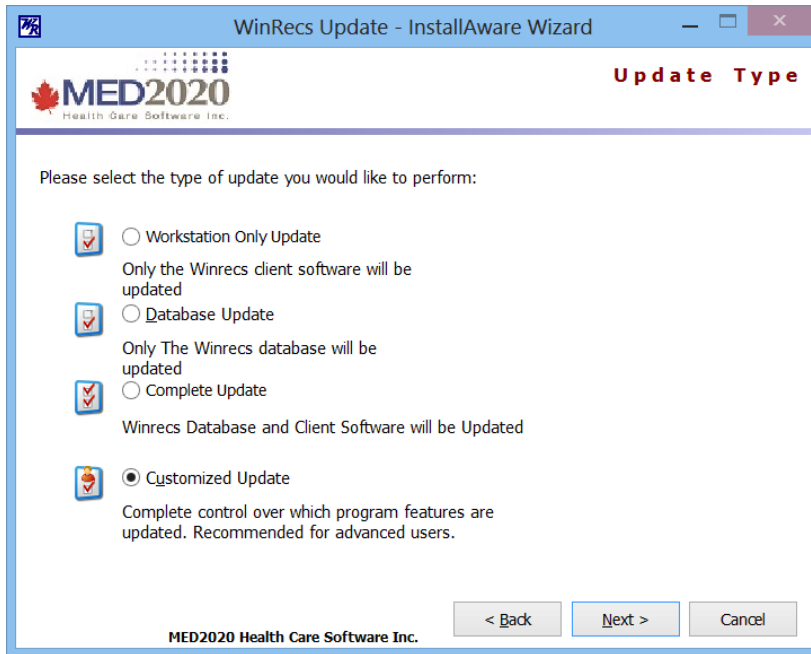
Update is complete; click "Close"

For additional databases the update should be relaunched following the same steps.

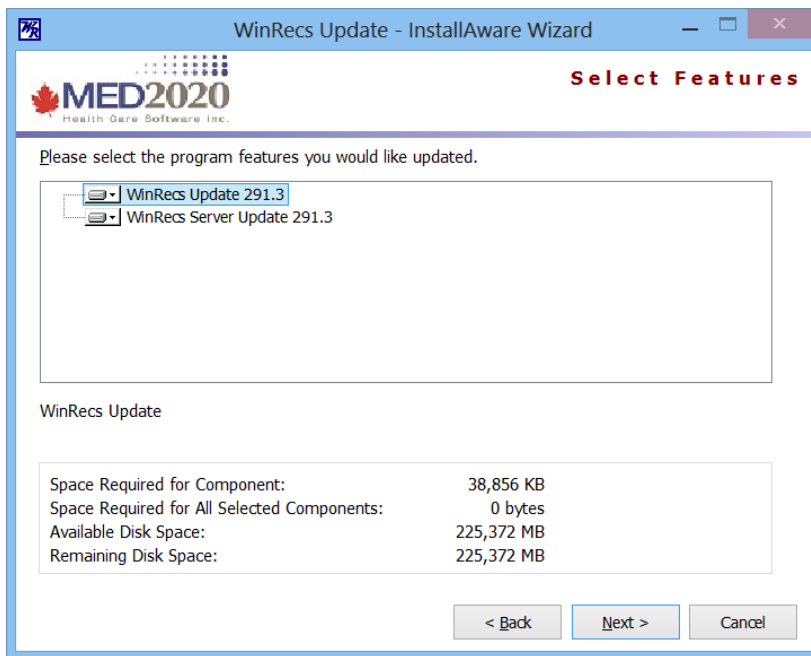


Click "Finish".

## Option 4: Customized Update



Select Customized Update and Click “Next”.



Select the desired option from the screen and click “Next”.  
Use instruction from options 1, 2 or 3 depending on the selected option.



## Documentation

### **dbresults.xml**

After running an update, this file will be created and placed in the directory of the update program. If there are errors reported by the update process and found in the dbresults.xml file, please email this file to Customer Support (support@med2020.ca) and a representative will follow-up with you as soon as possible.

This page is intentionally left blank