

## Applying Updates for WinRecs 297.0



## **MED2020 Health Care Software Inc.**

MED2020 Health Software Inc. (MED2020) is a leading provider of modular health information management solutions for the health care industry and is headquartered in Ottawa, Ontario. Solutions are offered to assist in capturing, reporting and analyzing health data to support enhanced information sharing, encourage informed decision making and streamline facility operations. MED2020's flagship product, WinRecs™, is the foundation for a complementary suite of modules that have also been designed to assist health information management departments with their operational needs.

### **Contact Details**

Should you have any questions regarding the content of this user guide, please do not hesitate to contact MED2020 Client Services with the contact information below:

#### **Head Office**

4471 Innes Rd., Suite 200  
Ottawa, Ontario  
K4A 1A7

Toll Free: (800) 461-2020

Tel: (613) 830-3761

Fax: (613) 830-5992

#### **Our regional offices located in Manitoba and British Columbia**

Email: [support@med2020.ca](mailto:support@med2020.ca) Web: <http://www.med2020.ca>

## Table of Contents

Before You Begin.....	5
Database Update .....	5
Database Update Log “dbresults.exe” .....	8
Workstation Update .....	9

## About This Document

The information contained in this document focuses on applying updates for WinRecs.

To learn more about using WinRecs please refer to the WinRecs User Guide, also available as a download from the MED2020 Client site, located in Documentation Folders within the Update Folders at:

<ftp://web.med2020.ca/WR2Update/>

## Document Conventions

Throughout this Technical Guide, text formatting is used to complement the information provided.

**Function keys and key sequences are distinguished by large bold text.**

Example: **CTRL+M**

*References to modules, functions and other values as displayed on the screen are distinguished by italic text.*

Example: *WinRecs Application Menu*

**File names, paths and cross-references to other sections of the User Guide are distinguished by bold text.**

Example: **Command line used for installing SQL Server**

Example: **D:\setup.exe /template.ini**

Values to be typed are distinguished by the courier font.

Example: Type 01011920 in the field.

**Note:** Important notes and hints are distinguished by blue text with a light gray background.

Example **Note:** This is an important note.

## Before You Begin...

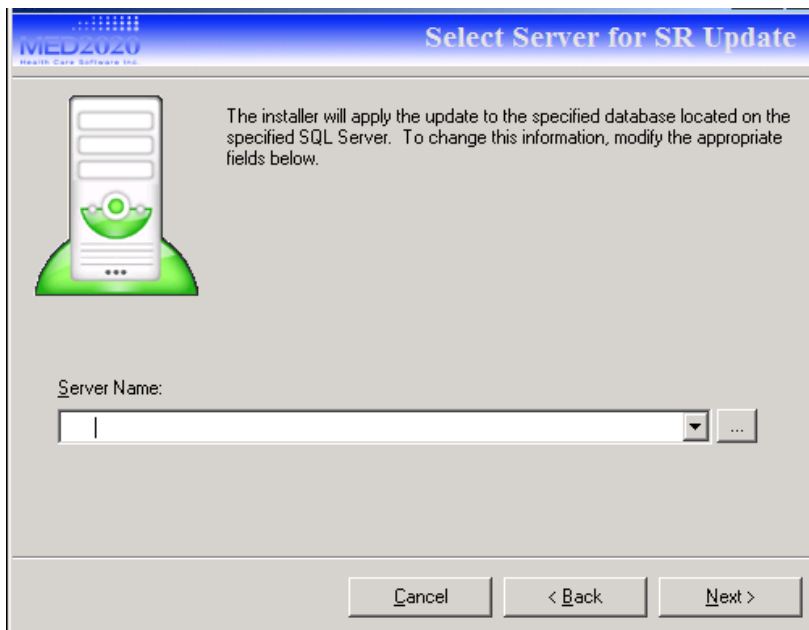
Prior to installing any software, please ensure that you have made backup copies of your sensitive data. Also, please ensure that you have your backups readily available, and that you know the exact path to your databases. MED2020 cannot be held responsible for data loss, nor can MED2020 assist with data backup and recovery. Instructions for backup and recovery are outside the scope of this document.

Update your test/live databases as per your usual internal process (turn off HL7 interface during update if applicable) and ensure all users are logged off the system.

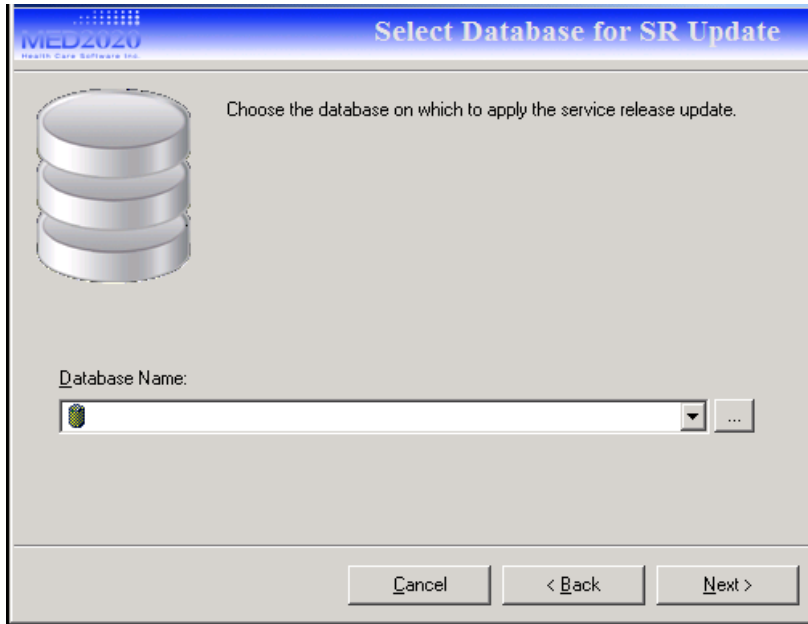
**Note:** It is recommended to turn off any antivirus program for the installation as it could interfere and block some of the files and/or processes from completing.

## Database Update

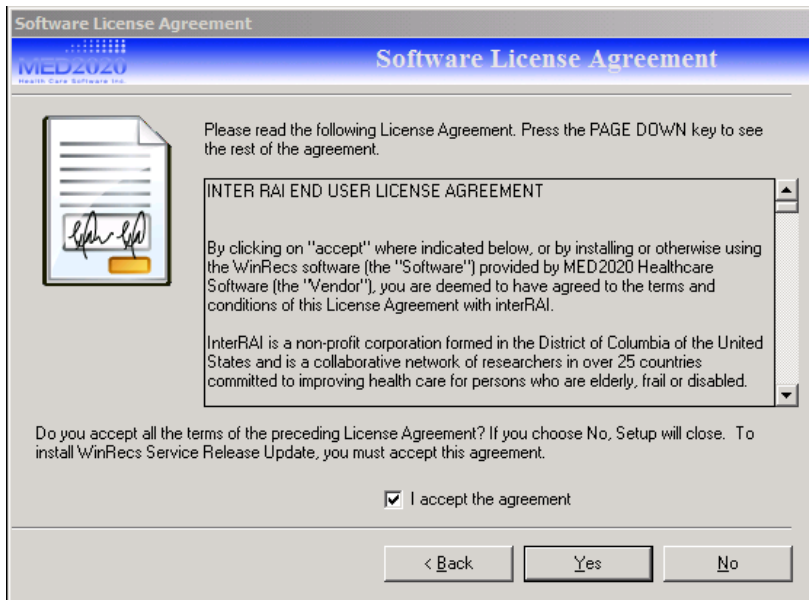
The database update file is named **WRDBU\_296\_0.exe**. This file must be run on the database server. Double click the exe to begin.



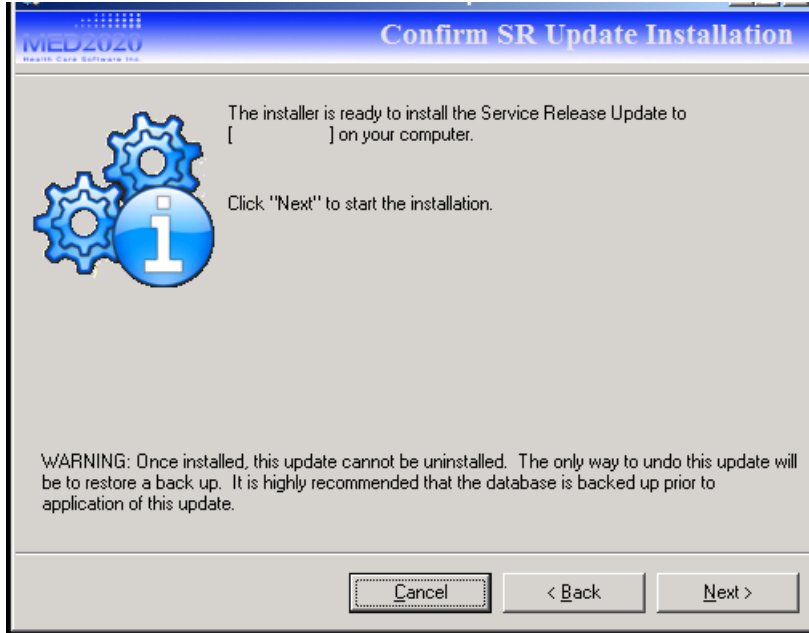
Select your server from the drop down menu or enter it manually;  
Click "Next"



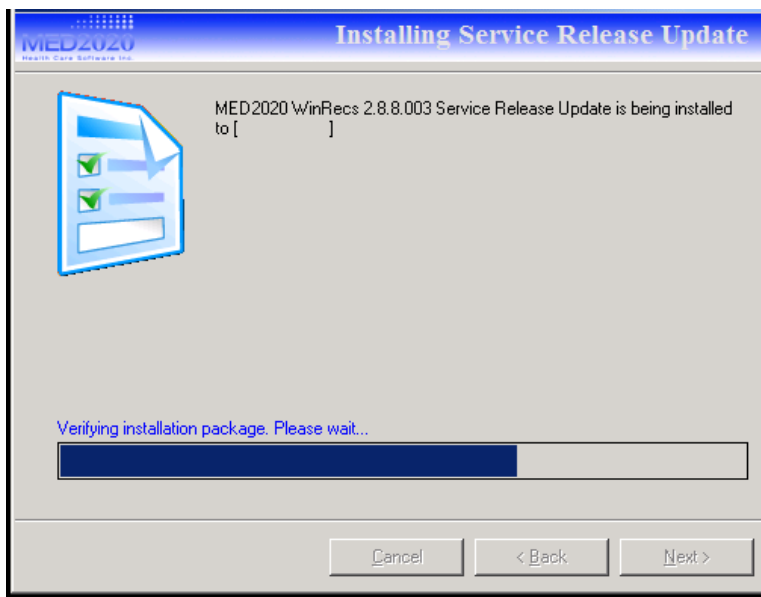
Select your database from the drop down menu or enter it manually;  
Click "Next"

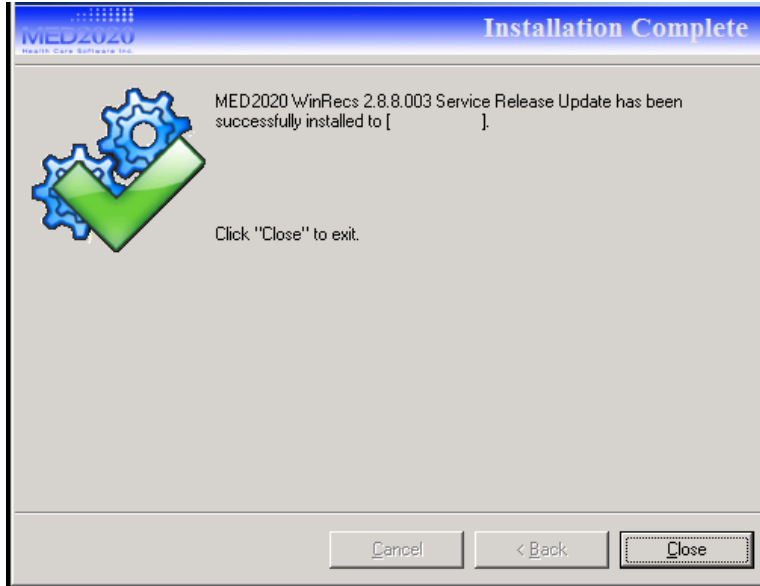


Accept the terms and click "Next".



Click "Next".





Update is complete; click "Close"

For additional databases the update should be relaunched following the same steps.

### Database Update Log "dbresults.exe"

After running an update, this file **dbresults.exe** will be created and placed in the directory of the update program. If there are errors reported by the update process and found in the dbresults.xml file, please email this file to Customer Support (support@med2020.ca) and a representative will follow-up with you as soon as possible.



## Workstation Update

The update package is provided in EXE and MSI; they can be accessed through the FTP site update folders at: <ftp://web.med2020.ca/WR2Update/>.

**The following are examples for the types of workstation updates:**

<b>292_3_WinRecs_Update.exe</b>	For manual execution on one workstation
<b>292_3_WinRecs_Update.msi</b>	For services (i.e. SMS push) to deploy it to multiple workstations

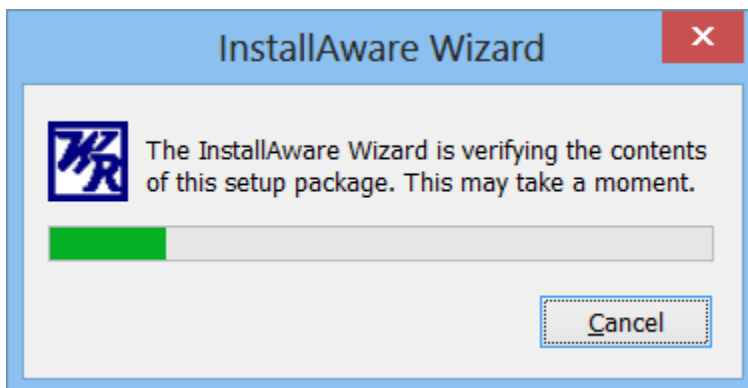
The following applies to the workstation/client portion of the update package:

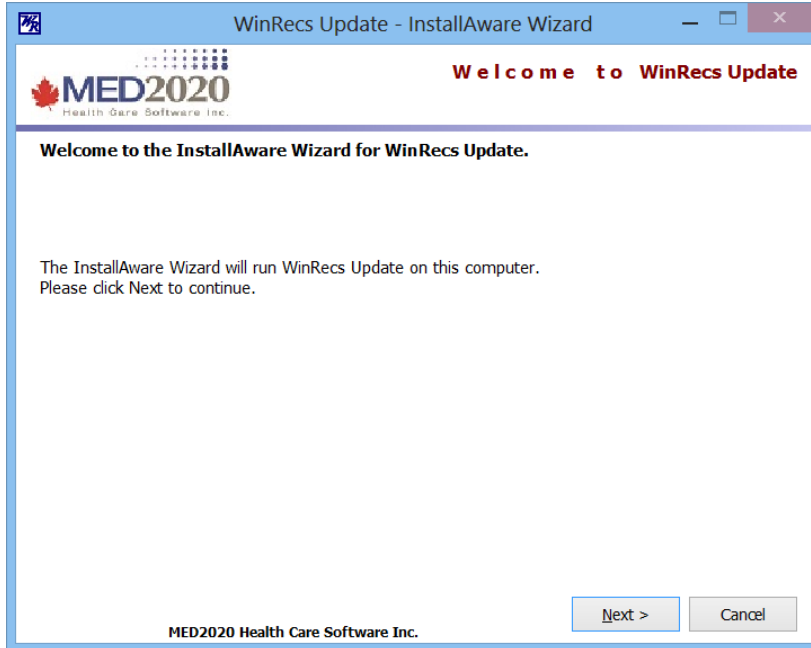
If local PC user permissions are too restrictive for the “log in/out/in” routine to successfully update the workstation with the latest WinRecs EXE and Grouper DLL, the .exe can be run by any administrator on any workstation with WinRecs already installed to update the installation directory with the necessary files. To assist sites that have many workstations requiring an update, the .msi program has been designed such that it can be included as part of a network “software deployment/push” and installed across a network.

If MSI package is used and “pushed” across the network in silent mode it will automatically perform workstation only update.

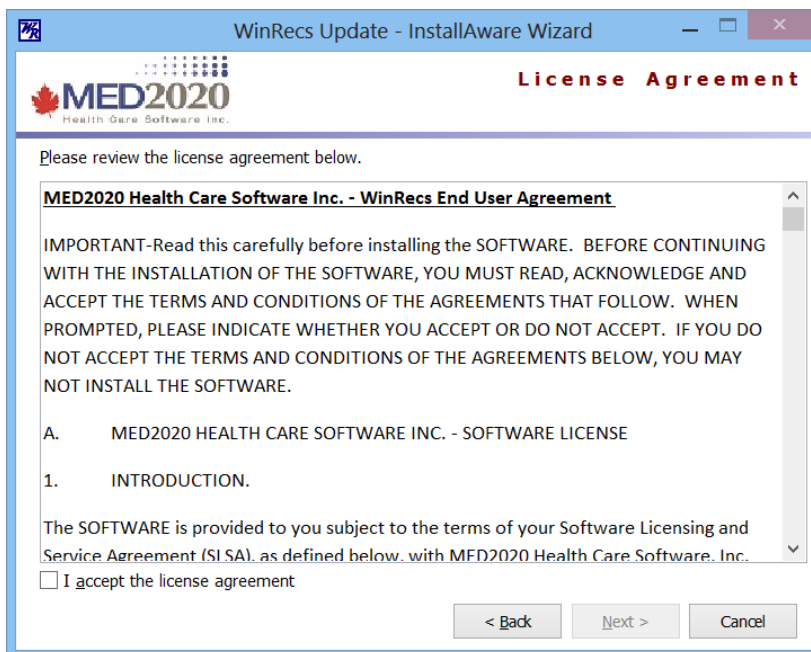
**Note:** If you are using the silent install, User Account Control Setting has to be turned off in Client machine in order to make the silent Installation running smoothly. Otherwise the “signed shell” would be pop up in client side when doing network push.

In order to start the update, double click on the WinRecs icon to begin update process.





Click "Next"



Accept the license agreement and click "Next"



**WinRecs Update - InstallAware Wizard**

**Product Registration**

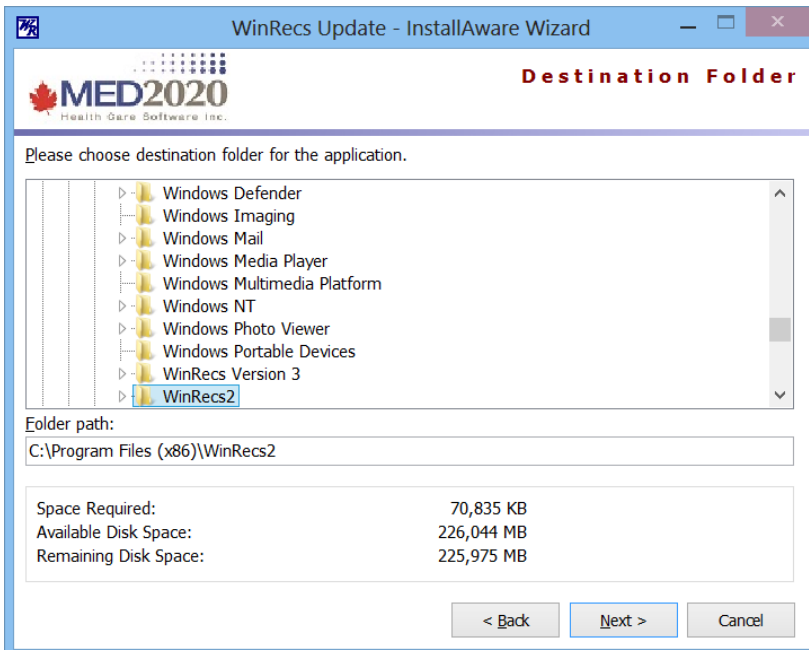
User Name:  
user

User Company:  
company

< Back   Next >   Cancel

MED2020 Health Care Software Inc.

Type in your User Name and User Company and click “Next”.



**WinRecs Update - InstallAware Wizard**

**Destination Folder**

Please choose destination folder for the application.

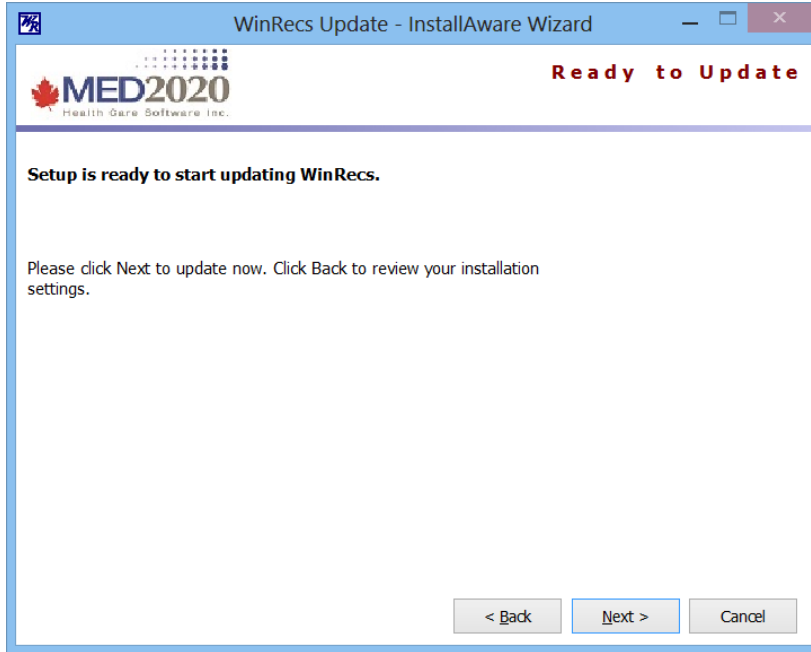
- Windows Defender
- Windows Imaging
- Windows Mail
- Windows Media Player
- Windows Multimedia Platform
- Windows NT
- Windows Photo Viewer
- Windows Portable Devices
- WinRecs Version 3
- WinRecs2**

Folder path:  
C:\Program Files (x86)\WinRecs2

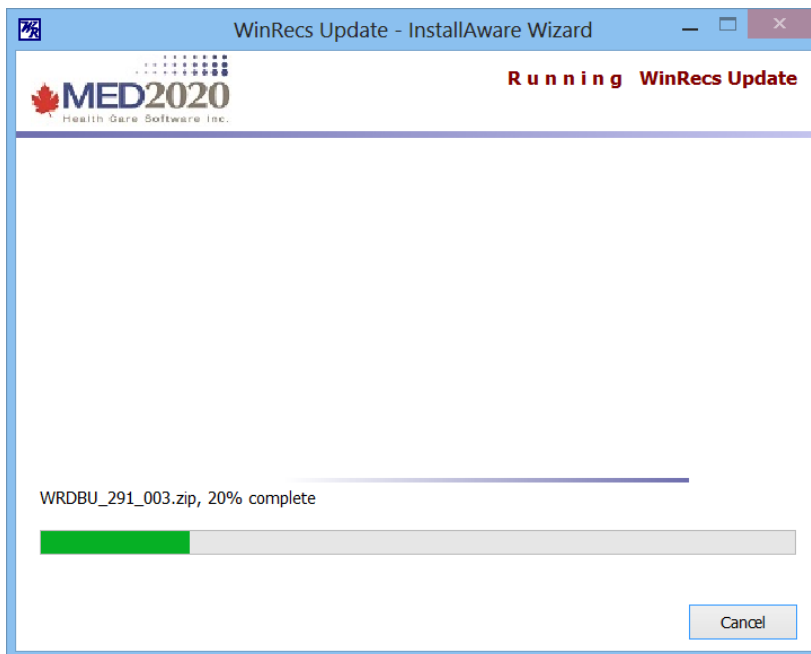
Space Required:	70,835 KB
Available Disk Space:	226,044 MB
Remaining Disk Space:	225,975 MB

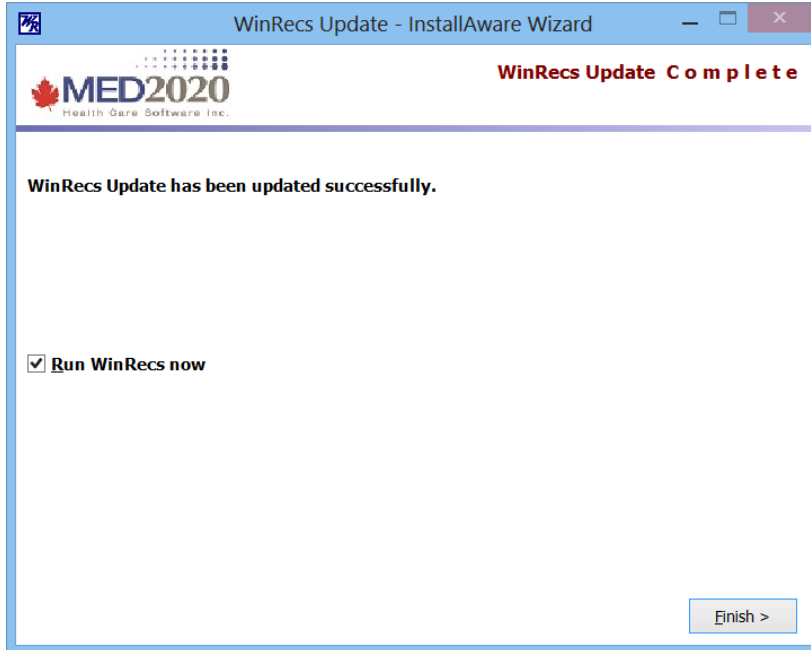
< Back   Next >   Cancel

Navigate to the location where WinRecs is already installed and click “Next”



Click "Next"





Your update is complete.

This page is intentionally left blank